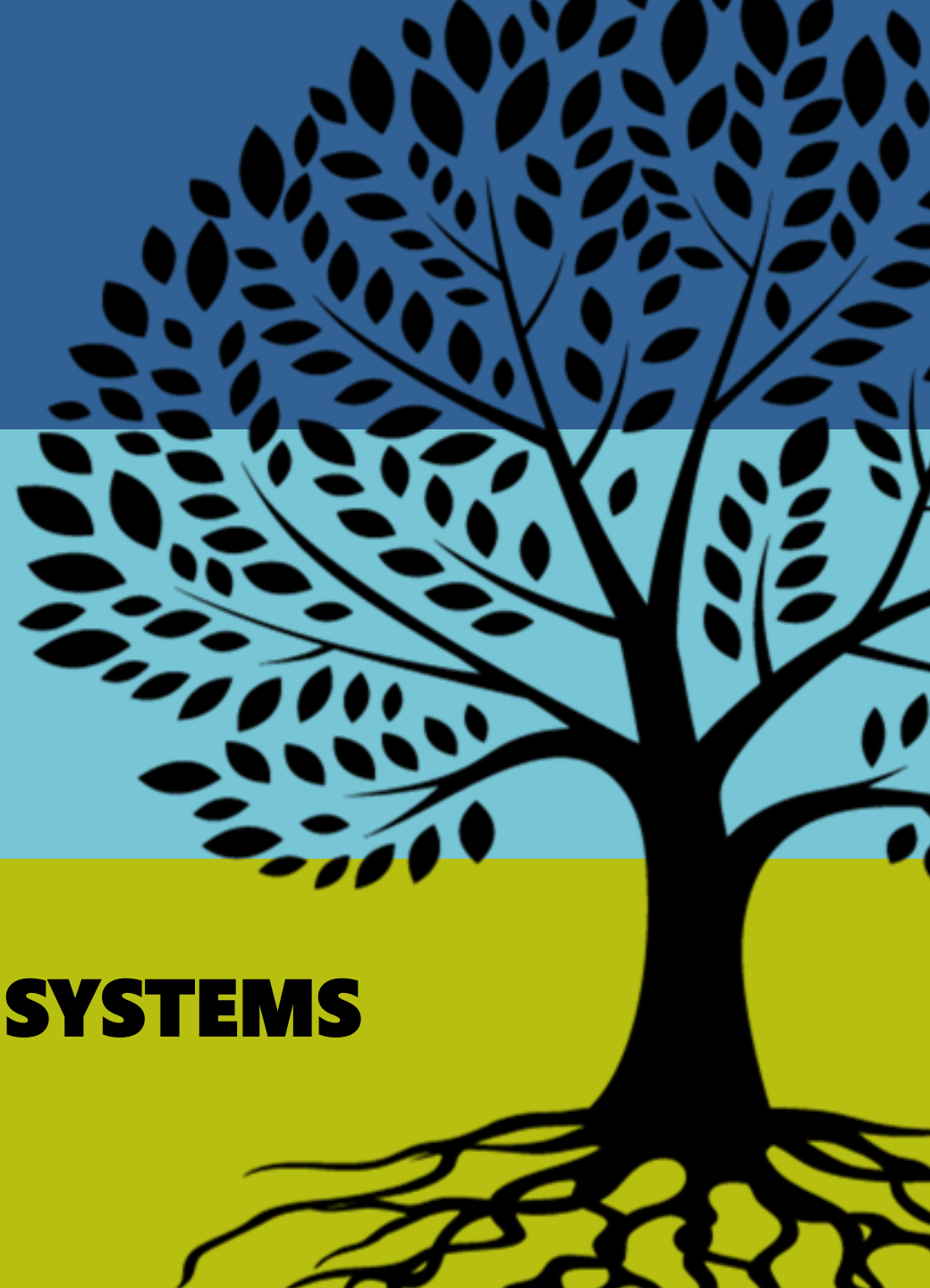


APPLICANT

HUB

**FUNDING APPROACH: POLICY, SYSTEMS
& ENVIRONMENTAL CHANGE**



Before we dive in...



Check out the **Funding Announcement** recording for a full overview of the opportunity!



This session will...

1

Define PSE Change and walk through how we approach it in the Funds.

2

Explore how PSE connects to the Social Determinants of Health (SDOH) and why this connection is essential for making real, lasting change.

3

Highlight the SDOH areas prioritized by DPH so you can see where your work aligns.



Mission

Engage and convene grantees and community stakeholders through equitable grantmaking and evaluation practices to challenge unjust systems and strengthen capacity to advance health equity.

Vision

Through contributions to equitable systems across sectors and the explicit prioritization of people of color and older adults, Massachusetts communities are transformed so that all residents have an equitable opportunity to the highest quality of life possible.



What is PSE change?

- Policy, systems, and environmental change strategies are a way of making **sustainable, lasting change** within a community to support healthy environments and behaviors across populations.
- These strategies create or **change infrastructure and modify the contexts** in which people live to improve community conditions that promote health.



Moving Upstream to Reduce Health Inequities

We fund efforts to reform the fundamental social and economic structures that distribute wealth, power, opportunities, and decision-making instead of downstream approaches that address immediate health and social needs.



Risk Behaviors, Disease, & Mortality

Ex.: Smoking, Poor Nutrition, Chronic Disease, Life Expectancy



Living Conditions

Ex.: Built and Social Environment, Housing, Employment, Education



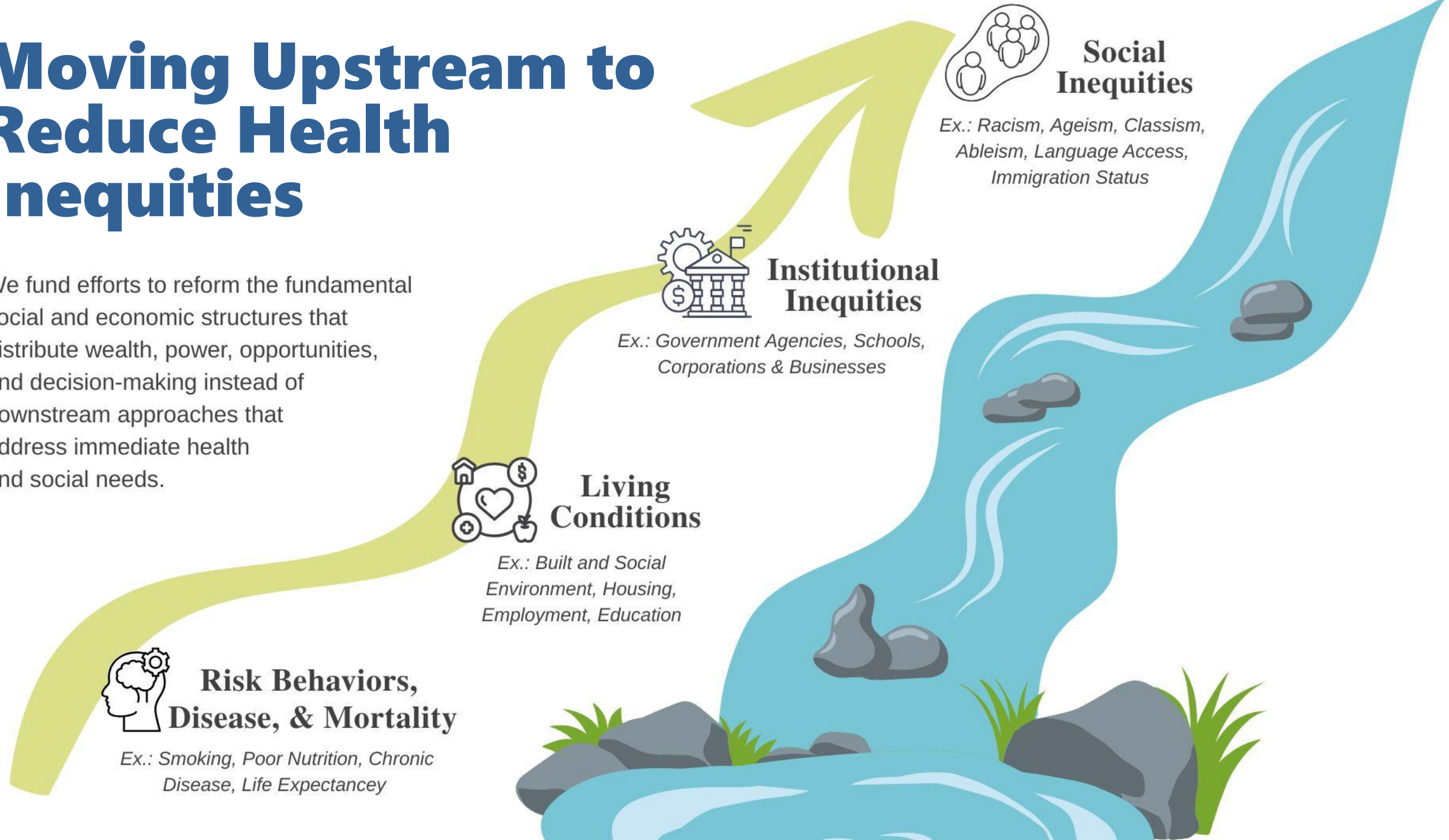
Institutional Inequities

Ex.: Government Agencies, Schools, Corporations & Businesses



Social Inequities

Ex.: Racism, Ageism, Classism, Ableism, Language Access, Immigration Status



DPH Health Priorities

Social Determinants of Health

- Built Environment
- Education
- Employment
- Social Environment
- Housing
- Violence

Health Outcomes

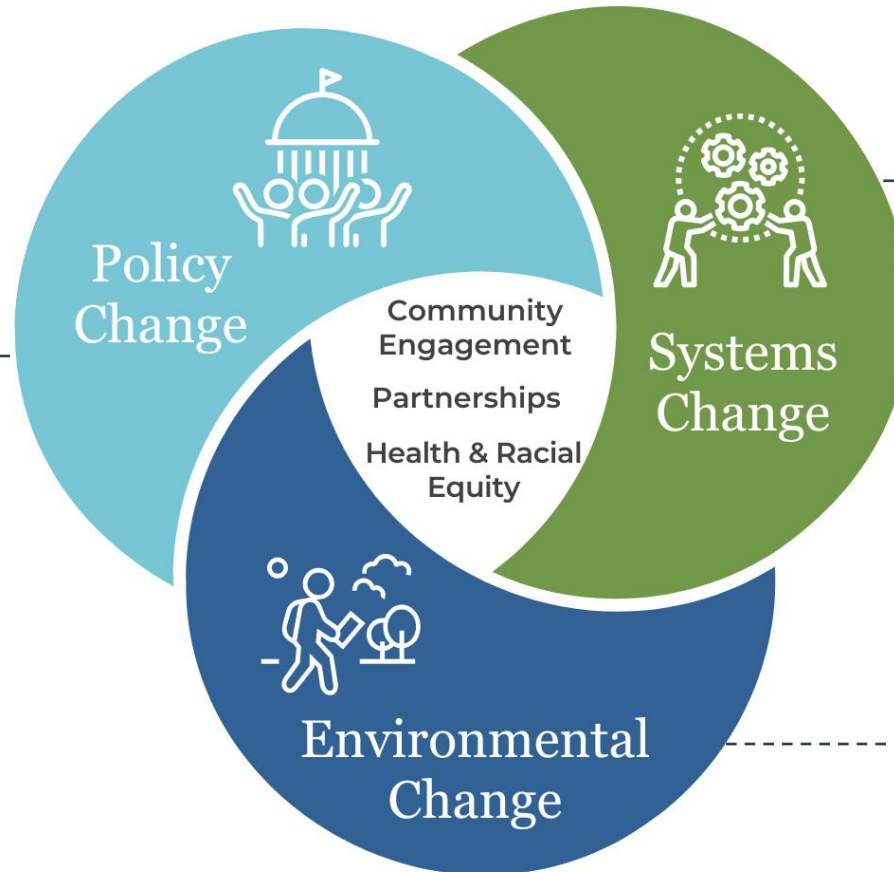
- Substance Use Disorders
- Housing Stability/
Homelessness
- Mental Illness/ Mental Health
- Chronic Disease



What is the PSE approach?

Creating, revising, or advancing policies that promote health and racial equity, including advocacy and education efforts to raise awareness.

- *Ex: Advocating for affordable housing policies*



Transforming organizational, institutional, or cross-sector processes and structures to be more equitable, effective, and responsive to community needs.

- *Ex: Shifting organizational or decision-making structures*

Improving the conditions where people live, work, and play to support healthier and more equitable communities.

- *Ex: Improving food access by helping launch a grocery store through a community process*

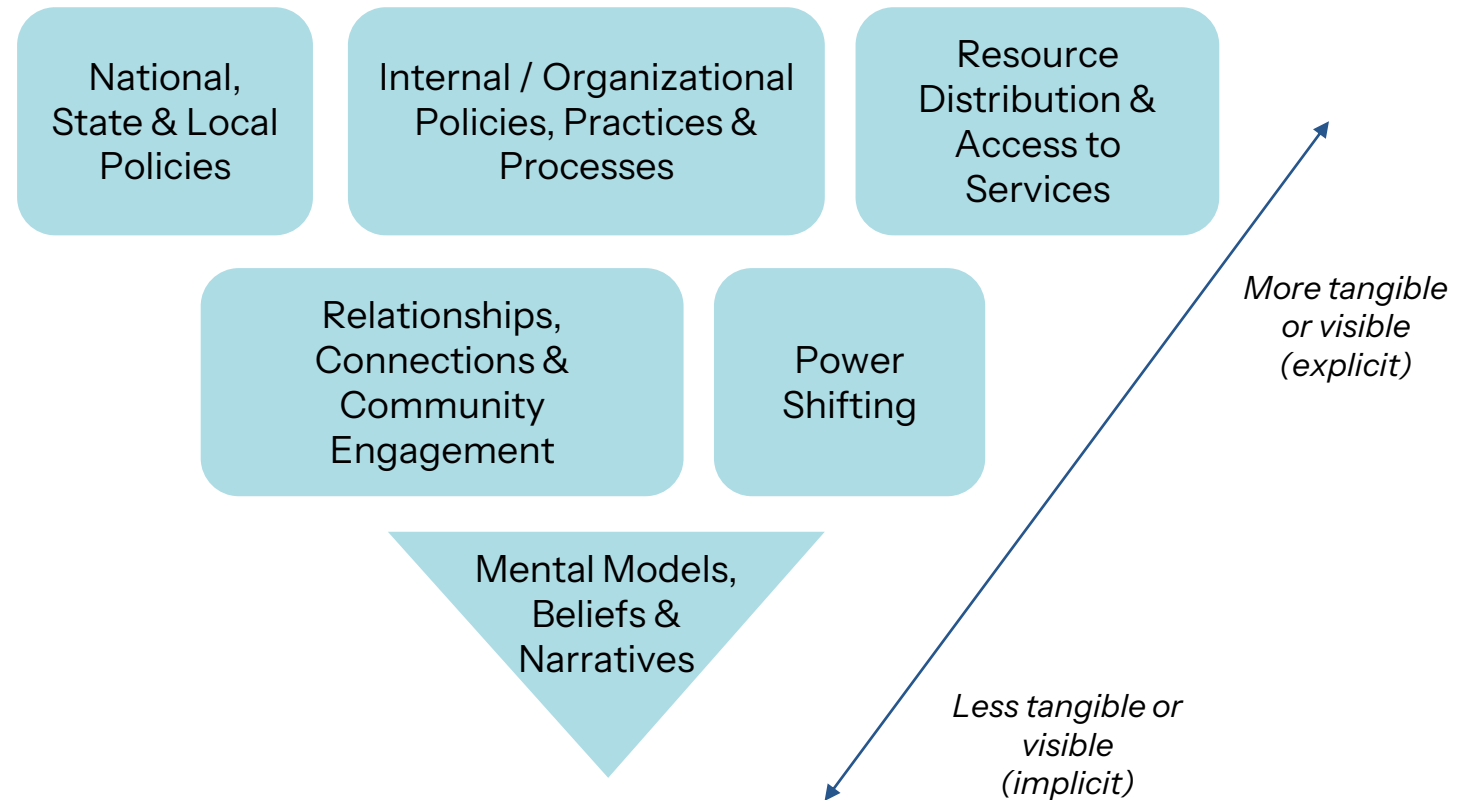


Evaluation Framework: Water of Systems Change

Six interdependent conditions that hold a social or environmental problem in place:

- Intertwined, and **can interact to perpetuate inequalities**
- Varying **degrees of visibility** to players in the system, largely due to how explicit, or tangible, they are to most people

The **MA CHHAF Evaluation Workgroup** led the process of adapting the original framework.



DPH Priority Health Outcome Issues

Substance Use
Disorders

Housing
Stability /
Homelessness

Mental Illness /
Mental Health

Chronic Disease

- **Policy changes** can improve housing stability and reduce homelessness.
- **Systems changes** can strengthen mental health and substance use support networks.
- **Environmental changes** can create safer spaces and reduce violence.



Let's Recap

- PSE change approaches move upstream to target the **social determinants of health, like housing, education, and employment.**
- This includes **changes to policies and practices** at the local, state, and national level, as well as within your organization or agency.
- It also means **changing systems** that shape how resources flow and the power dynamics of those involved in decision-making.
- It can also result in **changing the environment**, either physical or social environments, in ways that shift relationships and the narratives we use.
- Through PSE change approaches, we **move beyond service and program-based models to addressing root causes of health.**



Contact Us!

- Website: <https://mahealthfunds.org/>
- Questions: MACHHAFunds@hria.org
- For technical support with the SmartSimple portal, email grants@hria.org and use “MACHHAF” in the subject line.

