



— Massachusetts —
COMMUNITY HEALTH AND
HEALTHY AGING FUNDS

Funding Announcement Webinar

2026 Funding Cycle Information Session

January 21, 2026



Webinar Logistics

1

Ask any content questions using the **Q&A feature**

2

To just see the speakers during presentations, click **Speaker View** in the top right corner of your screen

3

To see all participants, click **Gallery View** in the top right corner of your screen

4

The webinar recording, slides, and transcript will be **made available on the website.**

5

Closed Captioning is available
Click "More">"Captions">"Show Captions"

Webinar Objectives

1. Understand the vision, approach, and purpose of this funding opportunity through MA Community Health & Healthy Aging Funds (MACHHAF)
2. Review the RFP details, including funding priorities, grant types, eligibility, and deadlines.
3. Understand the application process, required materials, and scoring criteria.
4. Learn about resources and technical assistance available to applicants

Agenda



HRiA Funds Grantmaking Team



**Alberte-Altine
Gibson**
Director



Caitlin Donnelly
Program Officer



Chenchen Hensz
Program Officer



Jamiah Tappin
Program Officer



**Amanda
Kikonyogo**
Program Coordinator



Hannah James
Program Officer



Overview of MA Community Health & Healthy Aging Funds



MA CHHA Funds Mission & Vision



Mission

Engage and convene grantees and community stakeholders through equitable grantmaking and evaluation practices to challenge unjust systems and strengthen capacity to advance health equity.



Vision

Through contributions to equitable systems across sectors and the explicit prioritization of people of color and older adults, Massachusetts communities are transformed so that all residents have an equitable opportunity to the highest quality of life possible.



— Massachusetts —

COMMUNITY HEALTH AND
HEALTHY AGING FUNDS

Cohort 1 - Cohort 3 Awardees Overview

Total Funding

\$45.9M

Who Receives Funding

82 + >110

Awardees

Partners

Total Awardees

Distribution of Funds

\$2.7M

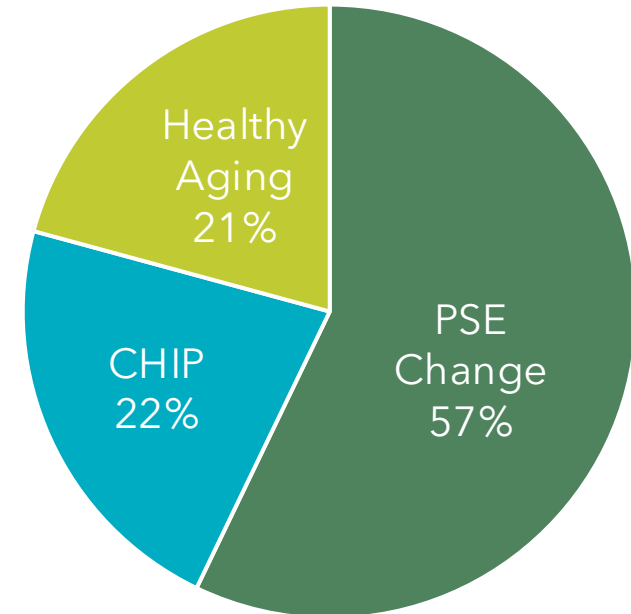
Community engagement

\$4.2M

Partnerships

\$39M

Funds Awardees



PSE Grant: 45 Awardees, 57% of all grants
CHIP Grant: 17 Awardees, 22% of all grants
Healthy Aging Full Grant: 20 Awardees, 22% of all grants

Funds 2026 Grant Cycle General Timeline



Funding Opportunity At-A-Glance

Available Funding	\$15M – we expect to make between 20-25 awards
Grant Start Date	July 1, 2026
Eligible Applicants	Massachusetts-based non-profit 501(c)3 organizations or groups with a 501(c)3 fiscal sponsor, quasi-governmental organizations and municipalities are eligible to apply.
Eligible Activities	Community-centered approaches that disrupt barriers to health and their root causes including structural racism, poverty, and deep power imbalances.
Application Deadline	March 31, 2026, at 5:00 PM EST
Contact	MACHHAFunds@hria.org
Website	www.mahealthfunds.org/apply



Overview of the Determination of Need Initiative



About the Team



Massachusetts Department of Public Health

The Department of Public Health (DPH) is a state agency with a mission to prevent illness, injury, and premature death, to assure access to high quality public health and health care services, and to promote wellness and health equity for all people in the Commonwealth. DPH makes final decisions regarding the Massachusetts Community Health and Healthy Aging Funds.



Executive Office of Aging & Independence

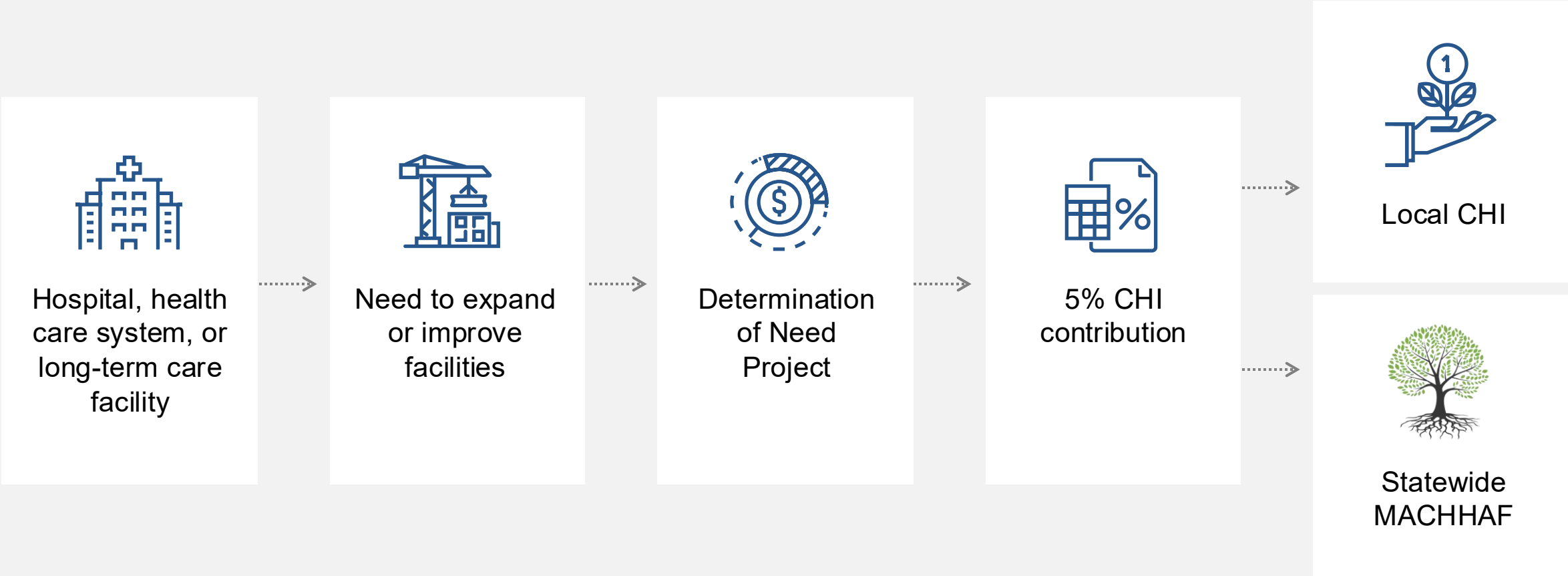
The Executive Office of Aging & Independence (AGE) provides quality aging-related resources, tools, and support through a network of regional non-profit agencies and municipal agencies across the state. AGE supports aging adults to live and thrive, safely and independently and provides guidance and expertise to support the administration of the Healthy Aging Fund.



Health Resources in Action

Health Resources in Action (HRiA) is a non-profit organization working to improve and reimagine public health. We connect, consult and collaborate to solve complex challenges of access and equity in our health and social systems. Together with our partners, clients and collaborators, we create actionable solutions so that all people can thrive. HRiA serves as the fiscal agent responsible for the implementation of the Funds.

Overview of Massachusetts' Determination of Need Community Health Initiative Process

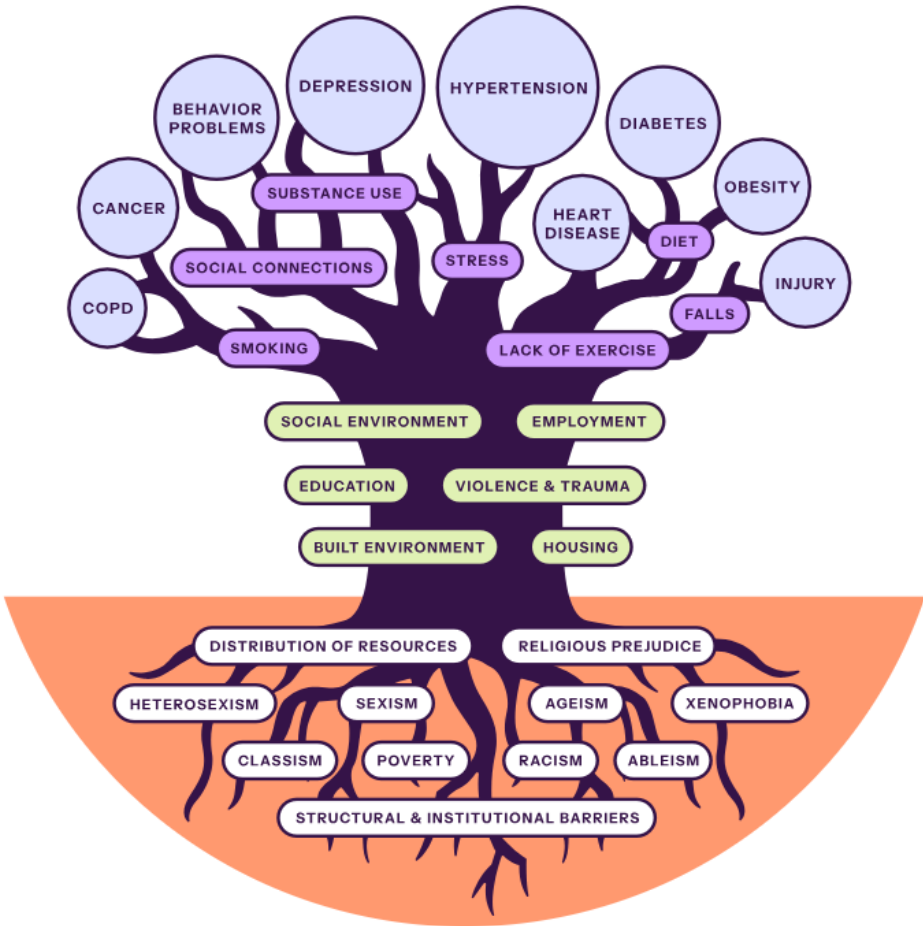
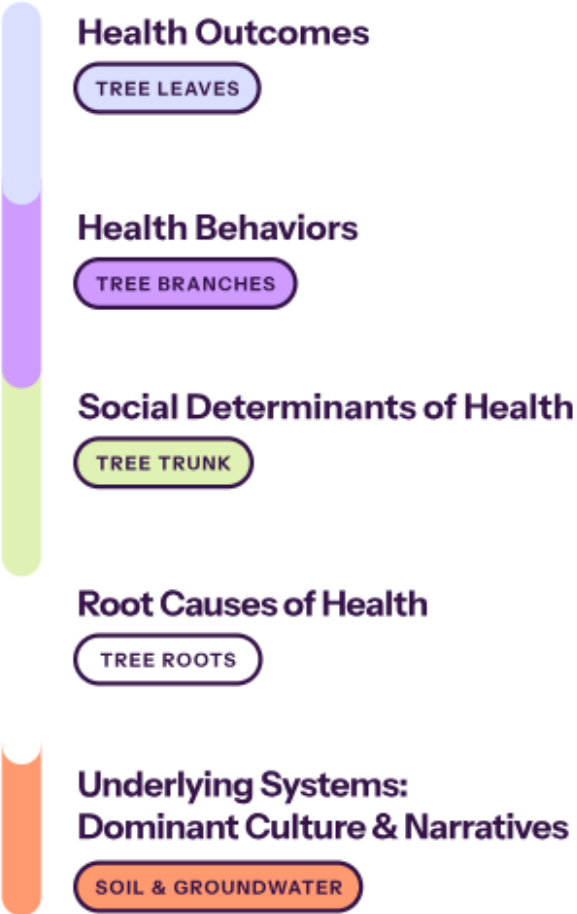


**CHI funding contribution percentage varies based on project Applicant and application type.*

The Funds' Overarching Approach



Leading with Racial Justice & Addressing Root Causes of Inequities



Moving Upstream to Reduce Health Inequities

We fund efforts to reform the fundamental social and economic structures that distribute wealth, power, opportunities, and decision-making instead of downstream approaches that address immediate health and social needs.



Risk Behaviors, Disease, & Mortality

Ex.: Smoking, Poor Nutrition, Chronic Disease, Life Expectancy



Living Conditions

Ex.: Built and Social Environment, Housing, Employment, Education



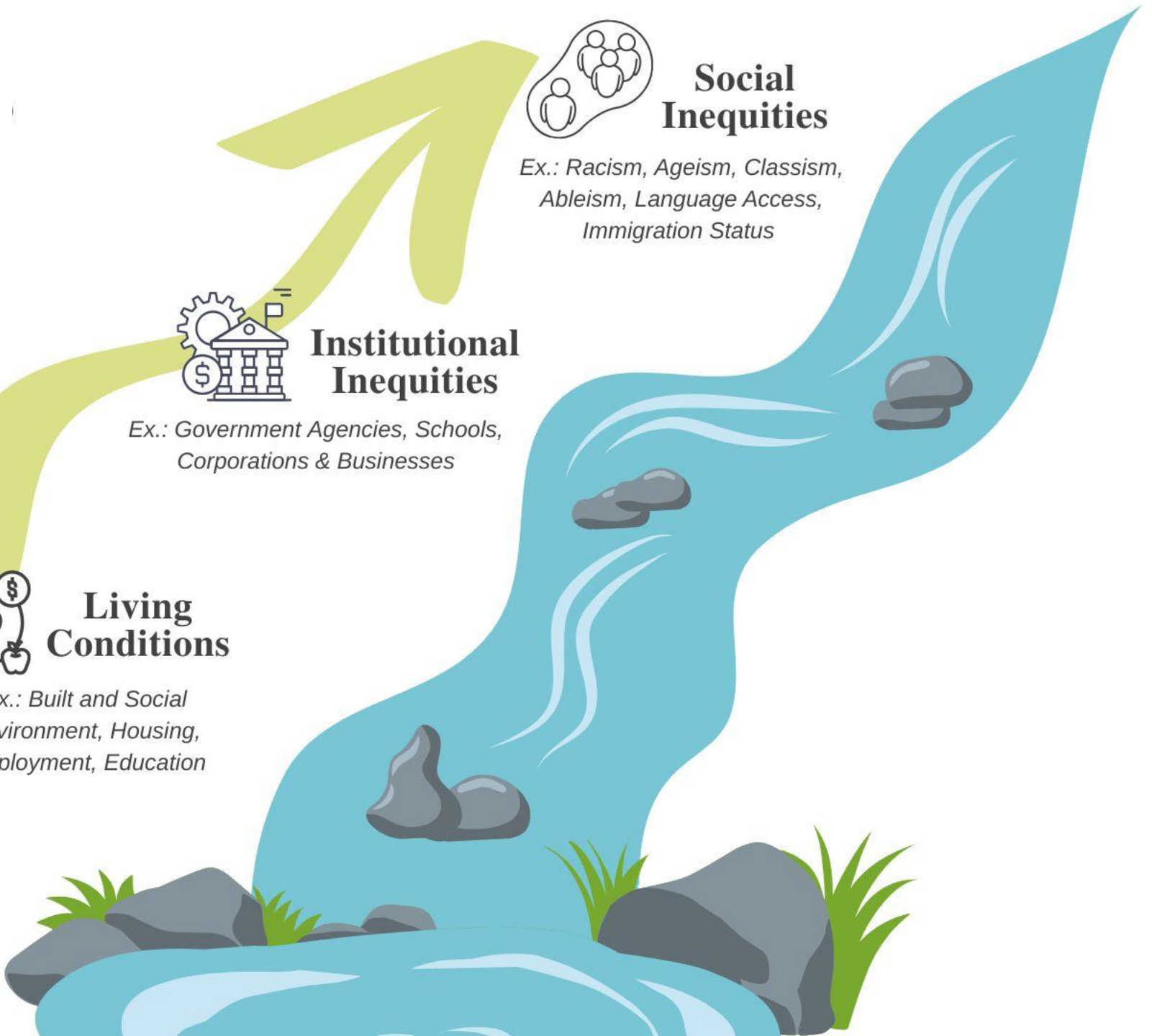
Institutional Inequities

Ex.: Government Agencies, Schools, Corporations & Businesses

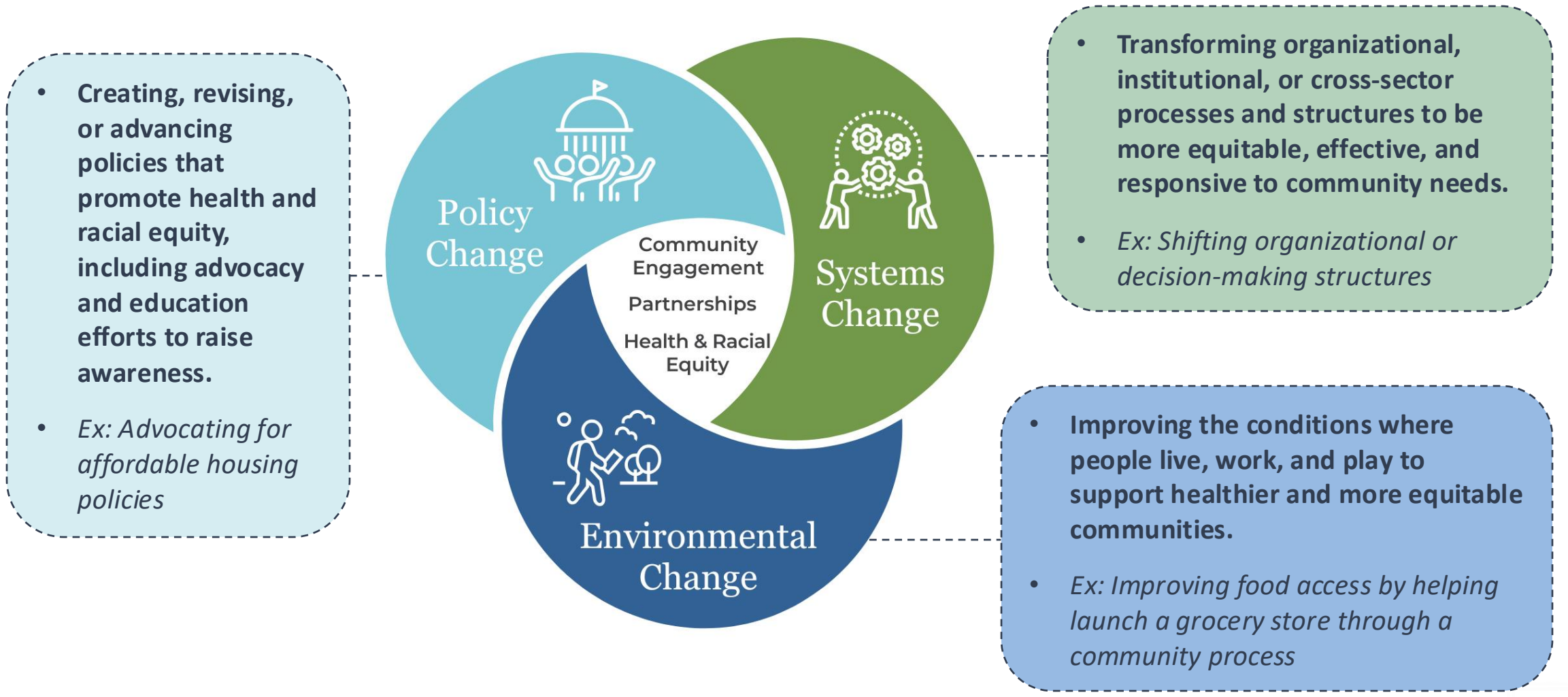


Social Inequities

Ex.: Racism, Ageism, Classism, Ableism, Language Access, Immigration Status



Policy, Systems, and Environmental Change Approach

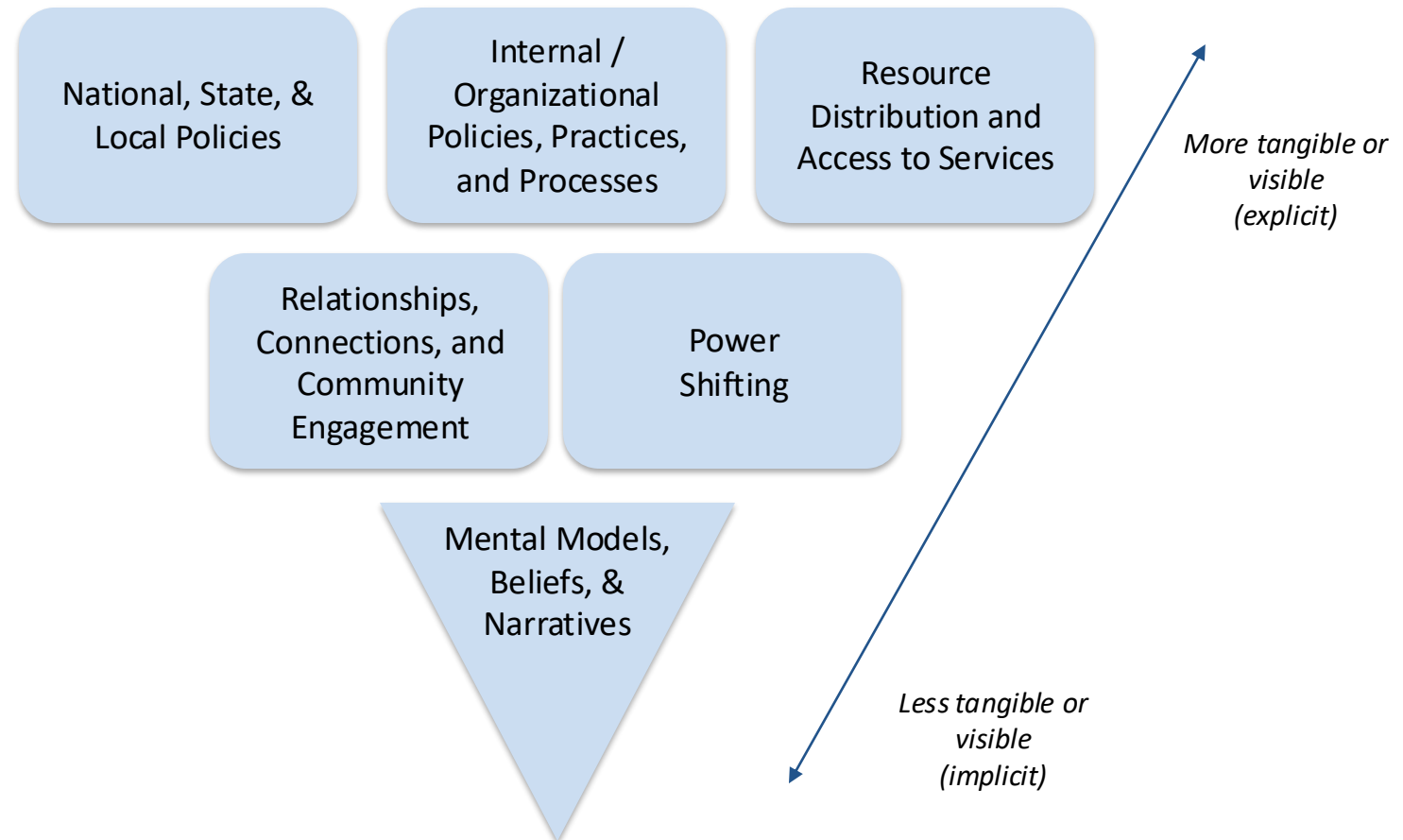


Evaluation Framework: Water of Systems Change

Six interdependent conditions that hold a social or environmental problem in place

- They are intertwined, and **can interact to perpetuate inequalities**
- Each have **varying degrees of visibility** to players in the system, largely due to how explicit, or tangible, they are to most people

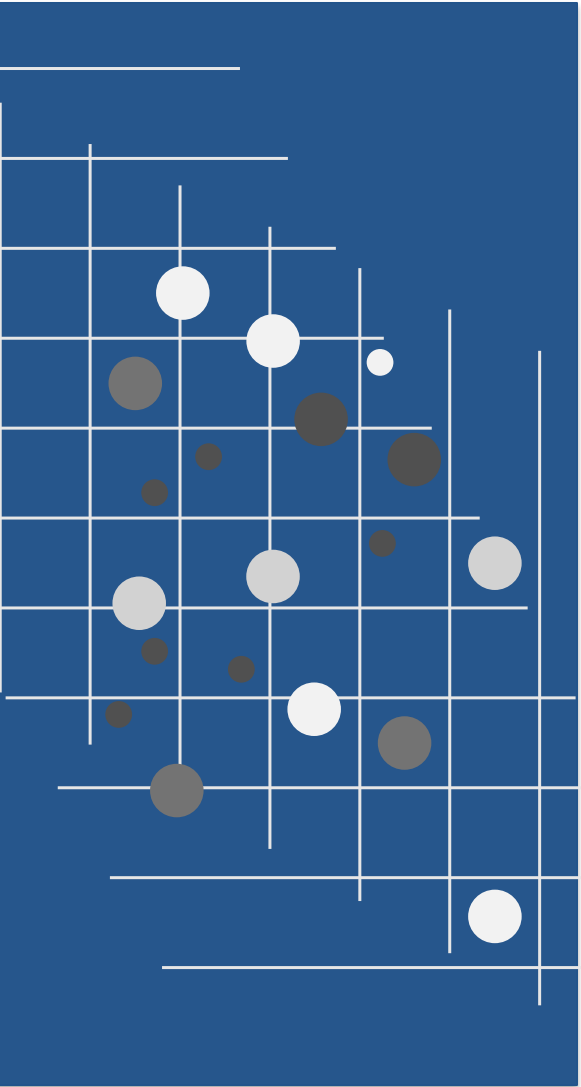
The **MA CHHAF Evaluation Workgroup** led the process of adapting the original framework



Overview of Funding Opportunity



Funds' Purpose



We envision a Massachusetts where communities are transformed so that all residents have an equitable opportunity to have the highest quality of life possible.



The Massachusetts Community Health and Healthy Aging Funds (the Funds) are committed to disrupting and removing barriers to health – structural and institutional racism, poverty, and deep power imbalances – through community-centered policy, systems, and environmental change approaches.



Eligibility & Priority Populations

Eligibility

Massachusetts based non-profit 501(c)3 organizations or groups with a 501(c)3 fiscal sponsor, **quasi-governmental organizations**, and **municipalities**



Priority Populations

- Communities outside of Boston that have not historically and routinely benefitted from previous local DoN community health initiative funding, and have high rates of health inequities
- Gateway and Rural areas for the Healthy Aging funding stream
- Organization reflective of the populations they serve



Funding Priorities

In light of the current political and social landscape, we aim to address key challenges during this funding cycle:

Organizations **advancing advocacy and policy efforts** related to their identified Social Determinant of Health.

Immigrant-facing organizations that are led by immigrants or those with lived experience, directly engage immigrant communities, and center their voices in leadership, decision-making, and program design.



Funding Stream Comparison

	Policy, Systems, and Environmental Change (PSE)	Healthy Aging	Community Health Improvement Planning (CHIP)
Approach	PSE Change approaches – local, regional, or statewide levels	Healthy aging focused PSE change approaches – local, regional, or statewide levels	Local and regional CHIP
Priority Geography	Communities outside of Boston that have not historically and routinely benefitted from DoN dollars and have high rates of health inequities	Gateway cities and rural areas that have not routinely benefitted from previous local DoN funding	Communities outside of Boston that have not historically and routinely benefitted from DoN dollars and have high rates of health inequities
Priority Population	Communities with high rates of health inequities	Older adults; communities with high rates of health inequities	Communities with high rates of health inequities
Who can apply	Organizations that meet eligibility criteria	Organizations that meet eligibility criteria	Organizations or coalitions that meet eligibility criteria, which are leading or participating in a collaborative CHIP process
Award Amounts by Grant Type	Planning: Up to \$50K/yr, 1-2 yrs Full: Up to \$200K/yr, 3-5 yrs	Planning: Up to \$50K/yr, 1-2 yrs Full: Up to \$100K/yr, 3-5 yrs	Planning: Up to \$50K/yr, 1-2 yrs Full: Up to \$375K total, 3-5yrs

Planning Grants

Purpose: This opportunity is to support organizations that seek organizational capacity building and technical assistance with upstream approaches and moving their work toward Policy, Systems, and Environmental (PSE) Change.

Who can apply?

Organizations that seek to move from short-term, time-limited efforts to long-term, sustainable approaches.

Funding Amount: Up to \$50K/yr, 1-2 yrs

Entities cannot apply for a Planning Grant and a Full PSE, CHIP or Healthy Aging Grant in the same application cycle. Previous Funds awardees are also ineligible to apply for Planning Grants. Recipients of planning grants are welcome to apply for a full grant in the next funding cycle; however, funding is not automatically guaranteed for planning grant grantees.



Eligibility



Eligibility

Massachusetts based non-profit 501(c)3 organizations or groups with a 501(c)3 fiscal sponsor, quasi-governmental organizations, and municipalities.

Ineligible Applicants

Current grantees

For-profit
businesses

Hospitals and
colleges/universities are
not eligible to apply as
lead applicants.



What types of activities are supported?



Ineligible Activities



**CAPITAL
EXPENDITURE**



RESEARCH



Most Common Questions About Eligibility

Can a 501c3 serve as a fiscal agent for multiple proposals?

Yes, an organization can serve as a fiscal agent for multiple proposals.

01. 03.

If we have received local DoN money or will receive money from local DoN, are we eligible to apply?

Yes, you are still eligible to apply.

Can one organization apply for funding? Does the application need to come from a collaboration of several organizations?

Yes, single organizations can apply for funding. However, collaboration is strongly encouraged.

02. 04.

Are organizations that have previously received funding from HRiA through another grant program eligible to apply?

Yes, you are eligible to apply

05.

Am I still eligible if I did not participate the Idea Phase?

Participation in the idea phase was not required for eligibility. Submitting an idea does not impact or enhance your application.



Applying to MACHHAF



Required Materials

All applicants must submit the following items through our SmartSimple portal:

Responses to application questions (eligibility, organization details, contact information)

Smart Simple Portal

Proposal Narrative (written or presentation slides)

PDF Format

Workplan using provided template

PDF Format

Budget using provided template

XLS or XLSX

Proof of tax-exempt status and W-9

PDF Format



Review Criteria

Alignment with Funding Purpose

Clear strategies to address structural barriers to health using upstream, community-centered PSE approaches; strong connection to the vision of the Funds.

Alignment with Funding Priorities

Focus on communities/populations with high inequities and limited historical access to DoN resources.

Collaboration & Partnerships

Evidence of cross-sector collaboration and intentional sharing of power and decision-making among partners.

Community Engagement

Meaningful involvement of community members—especially those with lived experience—in leadership, design, implementation, and evaluation.

Feasibility

Budget that is realistic, aligned with activities, and demonstrates a feasible plan.



Technical Assistance & Resources



Upcoming Live Sessions

**Tips For Submitting A
Strong Application**
(Webinar)

Feb 4, 2026

Office Hours

Feb 25, 2026

March 26, 2026

New Application Hub



Apply

We are excited to announce that the 2026 Funding Cycle is now open for applications!

This page is your central hub for the application process and includes everything you need to prepare and submit a strong application, including eligibility guidance, required materials, recorded webinars, and other technical assistance resources.

Need more help? For application portal assistance, please email grants@hria.org. For application questions, email MACHHAFunds@hria.org.

Applications are due on March 31, 2026, at 5:00 PM EST

1 Understand the Funding Opportunity	2 Application Overview	3 Submit a Strong Application	4 Build Your Budget & Workplan
5 Understand the Review Process	6 Watch Learning Sessions	7 FAQ	8 Apply Now



Post Award



What We Expect from Awardees



Develop a theory of change and an evaluation plan with clear metrics and activities



Engage in 15-20 hours of annual learning and capacity-building sessions



Participate in annual evaluation activities for the Funds by sharing progress, lessons learned, and stories through site visits, short reports, surveys, or focus groups

Track and report **annual evaluation activities** related to PSE strategies, community engagement, racial equity outcomes, and community-level data



Submit detailed annual expenditure reports according to HRiA deadlines



Support We Provide to Awardees

Evaluation guidance and detailed feedback on your eval plan and theory of change from our evaluation team

Learning spaces on key topics, such as building a racial equity framework or movement building, and other awardee identified areas of need



Comprehensive onboarding to set you up for success

Quarterly check-ins with your program officer and 1:1 support as needed

Office hours with other awardees in your funding stream to learn and share ideas for evaluation guidance, plus optional 1:1 sessions



Contact Information

- Website:
<https://mahealthfunds.org/>
- Questions:
MACHHAFunds@hria.org
- For technical support with the SmartSimple portal, email grants@hria.org and use “MACHHAF” in the subject line.



Questions



Questions Received



Three Funding Streams

PSE Change

Planning: Up to \$50K/yr, 1-2 yrs
Full: Up to \$200K/yr, 3-5 yrs



Invest in community-centered approaches that are intentional in addressing the root causes of inequitable health outcomes through policy, systems, and/or environmental change

CHIP

Planning: Up to \$50K/yr, 1-2 yrs
Full: Up to \$100K/yr, 3-5 yrs



Invest in the development of local and/or regional CHIPs that help advance PSE change through assessment, planning, and implementation phases of a community health improvement process.

Healthy Aging

Planning: Up to \$50K/yr, 1-2 yrs
Full: Up to \$375K total, 3-5yrs



In alignment with ReiMAGine Aging 2030, invests in strategies that tackle the root causes of health inequities through PSE changes focused on social determinants of health.