



— Massachusetts —
COMMUNITY HEALTH AND
HEALTHY AGING FUNDS

Massachusetts Community Health & Healthy Aging Funds

Policy, Systems, and Environmental
funding stream office hours

January 18, 2024



Introductions



Alberte Altine-Gibson
Director



Chenchen Hensz
Program Associate

Objectives

- Understand the Funds' policy, systems & environmental (PSE)change Funding Stream
- Answer Funding Opportunity Questions

The Approach

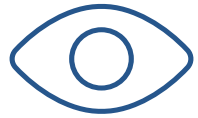


Funding Opportunity At-A-Glance

Available Funding	Planning: Up to \$50K/yr, 1-2 yrs Full: Up to \$200K/yr, 3-5 yrs
Grant Start Date	July 1 st 2024
Eligible Applicants	Massachusetts-based non-profit 501(c)3 organizations or groups with a 501(c)3 fiscal sponsor, quasi-governmental organizations and municipalities are eligible to apply.
Eligible Activities	Community-centered approaches that improve population health outcomes, address social determinants of health, and disrupt the root causes of health inequities through policy, systems, and environmental change approaches.
Application Deadline	Friday, March 29, 2024, at 11:59 PM EST
Contacts	MACHHAFunds@hria.org
Website	www.mahealthfunds.org/apply



Funds Vision & Mission



Vision

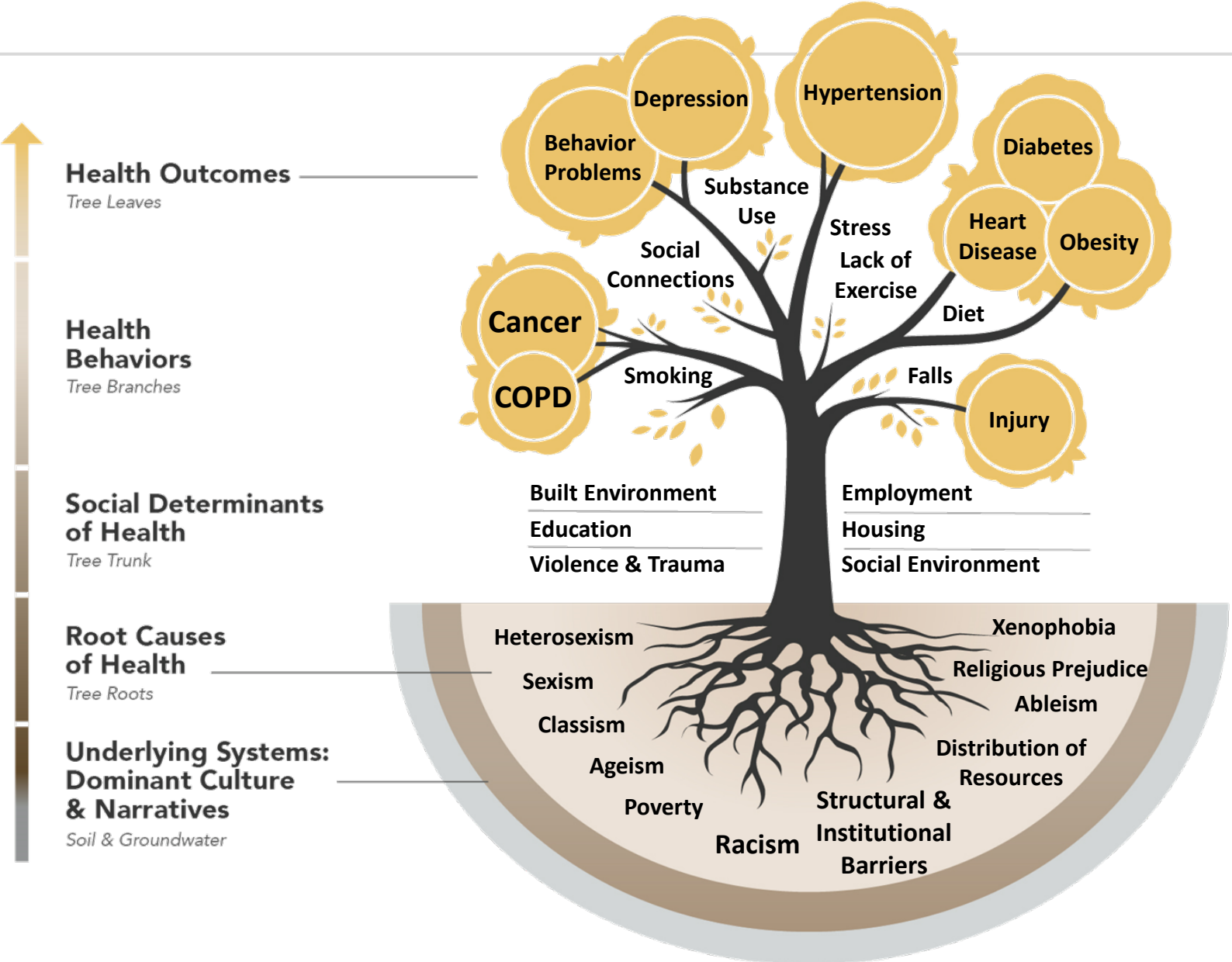
The MA CHHA Funds, through contributions to equitable systems across sectors and the explicit prioritization of people of color and older adults, envisions Massachusetts communities that are transformed so that all residents have an equitable opportunity to have the highest quality of life possible.



Mission

Disrupt and remove barriers to health by investing in community-centered innovative change approaches targeting the root causes of inequitable health outcomes.

What do we mean when we talk about health?



Prioritized SDoH and Health Outcome Areas



DPH Priority Health Outcome Issues

- Substance Use Disorders
- Housing Stability / Homelessness
- Mental Illness / Mental Health
- Chronic Disease

Grant Award Length and Amount

- We will provide Planning Grant and Full grant
 - Full: Up to \$200K/yr, 3-5 yrs
 - Planning: Up to \$50K/yr, 1-2 yrs
 - **** Applicant cannot apply for the full grant and the planning grant at the same time.**

Policy, Systems, & Environmental (PSE) Change Approaches

A Programs Approach



Hosting a community bike ride



Having an "open gym night" at a local school



Working with a corner store to become a designated Healthy Market



Opening and maintaining a community garden

VS.

A PSE Change Approach



Implementing a Complete Streets policy to ensure community roads are designed to be safe and accessible for all users



Implementing a town-wide Joint Use Agreement enabling community members to have access to the school's gym and fields when school is not in session



Creating a city-wide healthy retail program that supports food retailers to offer a variety of products and fresh, affordable healthy foods



Passing a municipal urban agriculture ordinance or policy which allows residents to use space for community gardens

PSE Awardee Examples-CHAPA

Issue

Stable, healthy, affordable housing is a key social determinant of health. Numerous studies have shown that where we live matters greatly to our health. The financial burden of trying to maintain an unaffordable roof over one's head often prevents individuals and families from paying for other necessities, such as adequate nourishment, heat, clothing and health care. Housing instability can result in emotional, behavioral and mental health deficiencies. Those who are homeless see these health outcomes exacerbated.

Solutions

1. Creation of local affordable housing coalitions
2. Increased participation of people at risk of housing instability
3. Increased participation by non-traditional stakeholders in each local housing coalition
4. Myth-busting and public education through affordable housing 101 sessions in English and Spanish
5. Convening of all MEI supported local housing coalitions

Health Outcome

Housing Stability/Homelessness

Root Causes of Health Outcomes

Structural & Institutional Racism; Racial Inequities

PSE Awardee Examples-Springfield EATS

Issue

Springfield has the largest number of SNAP recipients per capita in MA but ranks in the lowest number of HIP users and have the highest gap in the numbers of SNAP eligible but unenrolled residents. Most SNAP recipients do not know they have HIP benefits or if they have, do not understand how it works or where to use it. There are not enough farmer's markets in Springfield and other Gateway cities to meet the needs of structurally marginalized residents for fresh, culturally appropriate healthy food.

Solutions

1. Increase Residents Engagement by conducting a community food assessment in collaboration with partner agencies and residents.
2. Increase community awareness on HIP benefit through collaborative activities, social media
3. Enroll local corner stores to increase capacity to offer HIP benefits. Support delivery of produce; equipment needed; communication supplies and training on how to execute the program.

Health Outcome

Mental Illness and Mental Health

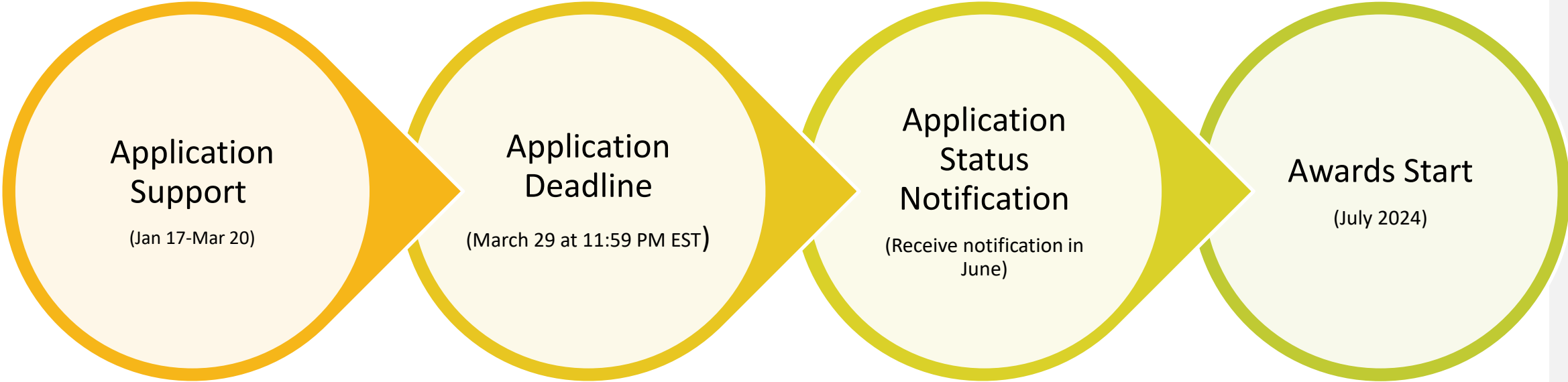
Root Causes of Health Outcomes

Structural & Institutional Racism; Racial Inequities

The Grantmaking Process



Grantmaking Process



Funding Stream Comparison

Funding Streams	PSE	CHIP	Healthy Aging
Approach	Policy, systems, and environmental change approaches – local, regional, or statewide levels	Local and regional Community health improvement planning	Healthy aging focused policy, systems, and environmental change approaches – local, regional, or statewide levels
Priority Geography	Communities outside of Boston that have not historically and routinely benefitted from DoN dollars and have high rates of health inequities	Communities outside of Boston that have not historically and routinely benefitted from DoN dollars and have high rates of health inequities	Gateway cities and rural areas that have not routinely benefitted from previous local DoN funding
Priority Populations	Communities with high rates of health inequities	Communities with high rates of health inequities	Older adults; communities with high rates of health inequities
Who can apply	Organizations or coalitions who meet eligibility criteria	Organizations or coalitions leading or participating in a collaborative CHIP process, who meet eligibility criteria	Organizations or coalitions who meet eligibility criteria
Award Amounts	Planning: Up to \$50K/yr, 1-2 yrs Full: Up to \$200K/yr, 3-5 yrs	Planning: Up to \$50K/yr, 1-2 yrs Full: Up to \$375K total, 3-5 yrs	Planning: Up to \$50K/yr, 1-2 yrs Full: Up to \$100K/yr, 3-5 yrs



Next Steps



Application Support Calendar

January



2024

SUNDAY	MONDAY	TUESDAY	WEDNESDAY	THURSDAY	FRIDAY	SATURDAY
31	1	2	3	4	5	6
7	8	9	10	11	12	13
			Funding Announcement Webinar	Q&A Session		
14	15	16	17	18	19	20
			CHIP Funding Office Hours	Healthy Aging Office Hours PSE Funding Office Hours		
21	22	23	24	25	26	27
	TA #1 Understanding RFP/Eligibility		TA #2 Understanding PSE Change			
28	29	30	31	1	2	3
	TA #3 Community Engagement		TA #4 Health & Racial Equity			
4	5	6	7	8	9	10

Information

1/10 3-4:30 pm Funding Announcement Webinars: Click [here](#) to register
 1/15 5-6 pm Q&A Session 2: Click [here](#) to register
 1/17 10-11 am CHIP Funding Office Hours: Click [here](#) to register
 1/18 1-2 pm Healthy Aging Funding Office Hours: Click [here](#) to register
 1/18 2:30-3:30pm PSE Funding Office Hours: Click [here](#) to register
 1/22 11 am-12 pm TA Session 1 - Understanding Policy, System, and Environmental (PSE) Change: Click [here](#) to register
 1/24 11 am-12 pm TA Session 2 - Understanding RFP & Tips for Grantwriting: Click [here](#) to register
 1/29 2 pm-3 pm TA Session 3 - Community Engagement: Click [here](#) to register
 1/31 2 pm-3 pm - TA Session 4 - How to formulate and implement ideas that advance Health & Racial Equity: Click [here](#) to register

MACHHAF Cycle 3
Funding Webinar & TA
Sessions Calendar

February



2024

SUNDAY	MONDAY	TUESDAY	WEDNESDAY	THURSDAY	FRIDAY	SATURDAY
28	29	30	31	1	2	3
4	5	6	7	8	9	10
	TA #5 Evaluation		TA #6 Application portal & application documents			
11	12	13	14	15	16	17
	Open Q&A					
18	19	20	21	22	23	24
25	26	27	28	29	1	2
3	4	5	6	7	8	9

Information

2/5 2- 3 pm TA Session 5 - Evaluation: Click [here](#) to register
 2/7 11 am-12 pm TA Session 6 - Application portal & application documents: Click [here](#) to register
 2/12 1-2 pm Open Q&A session: Click [here](#) to register

MACHHAF Cycle 3
Funding Webinar & TA
Sessions Calendar

March



2024

SUNDAY	MONDAY	TUESDAY	WEDNESDAY	THURSDAY	FRIDAY	SATURDAY
25	26	27	28	29	1	2
3	4	5	6	7	8	9
			Q&A			
10	11	12	13	14	15	16
			Q&A			
17	18	19	20	21	22	23
24	25	26	27	28	29	30
					Application Due	
31	1	2	3	4	5	6

Information

3/6 11 am-12 pm Open Q&A session: Click [here](#) to register
 3/20 11 am-12 pm Open Q&A session: Click [here](#) to register

MACHHAF Cycle 3
Funding Webinar & TA
Sessions Calendar

Visit Our Website

ABOUT THE FUNDS ▾

WHAT WE FUND ▾

APPLY ▾

RESOURCES ▾



Massachusetts Community Health & Healthy Aging Funds

www.mahealthfunds.org/apply

Closing

Stay in touch: MACHHAFunds@hria.org

Any Questions?

