



— Massachusetts —
COMMUNITY HEALTH AND
HEALTHY AGING FUNDS

Training: How to formulate and implement
ideas that advance Health & Racial Equity

June 2, 2022



Introductions



Alberte Altine-Gibson
Director



Jamiah Tappin
Program Officer – CHIP



Chenchen Hensz
Program Coordinator

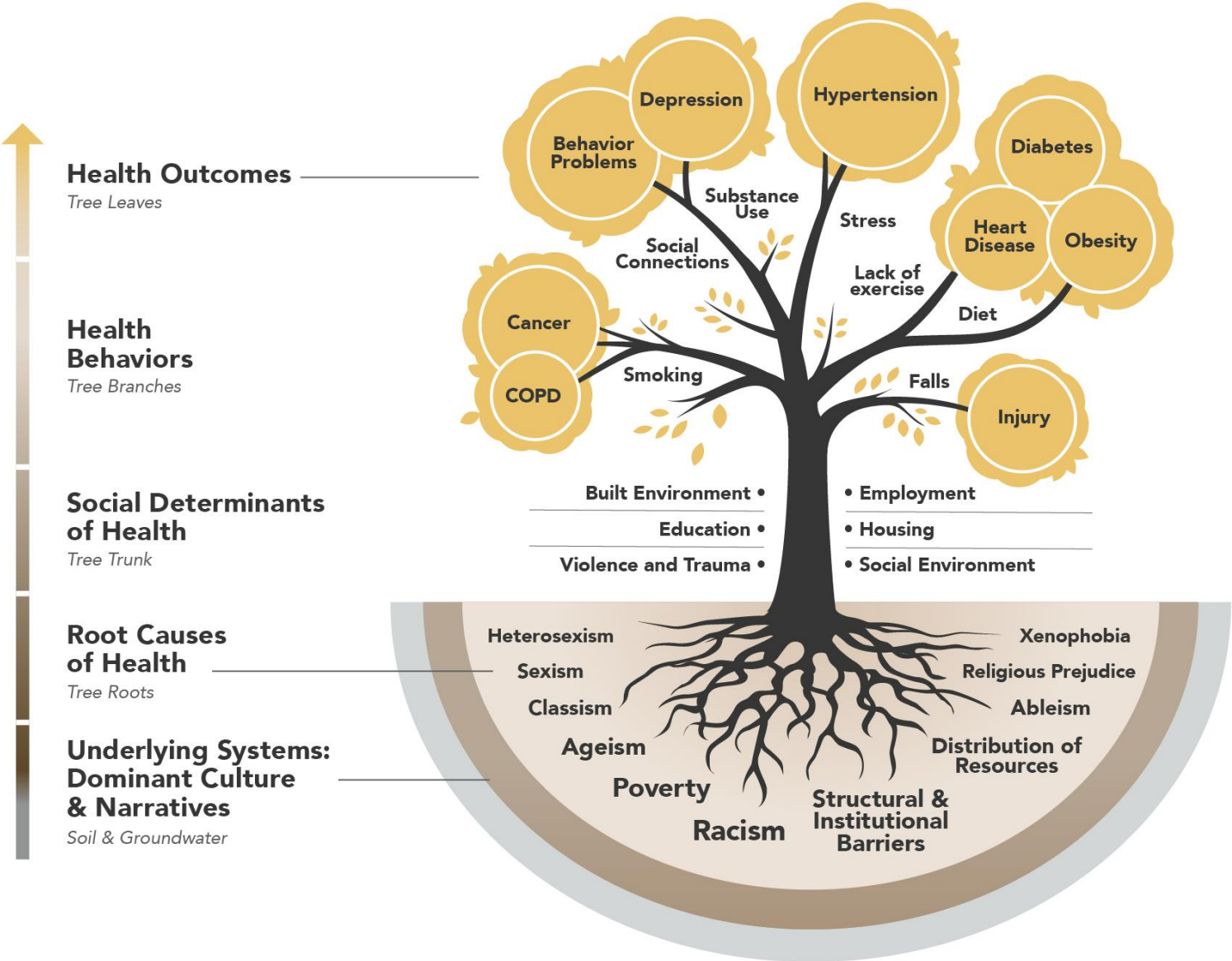
House Keeping Items

- If you have any **logistical or content questions**, please type them into the chat box.
- Close Captions/transcription is available. Click the **CC/Live Transcript** button on the bottom of your screen.
- This session will be recorded.

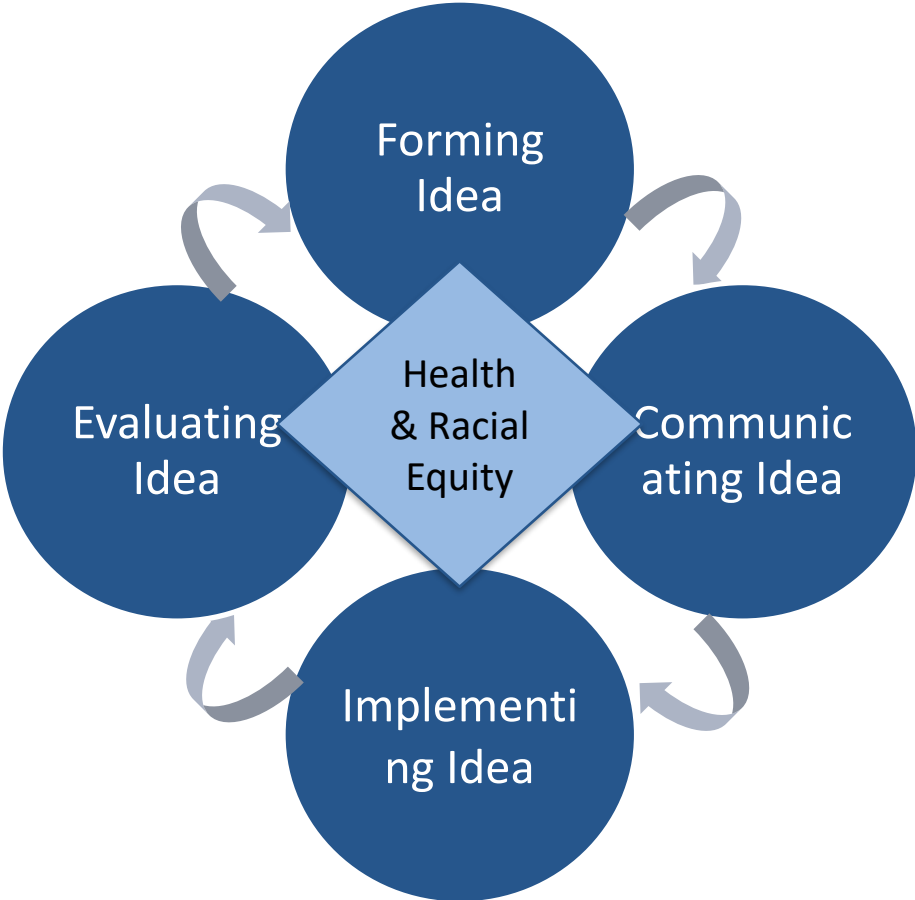
Agenda

Topic	Time
Training: How to formulate and implement ideas that advance Health & Racial Equity	20 minutes
Your Questions	40 minutes

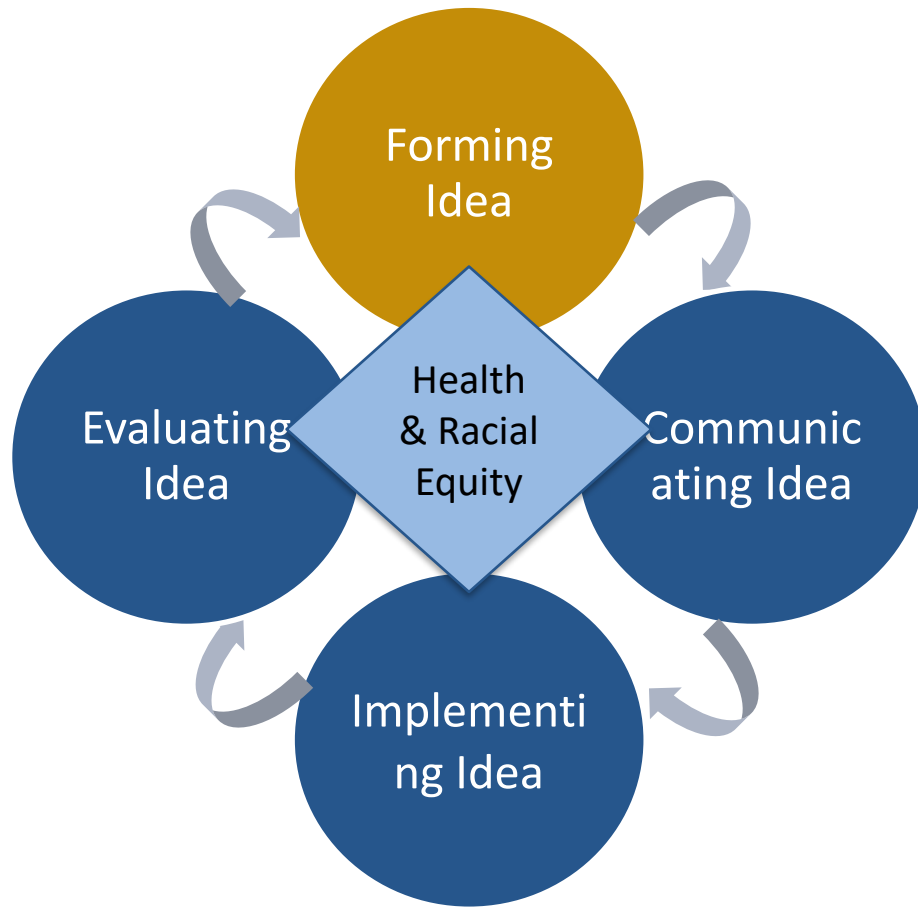
What do we mean when we talk about health?



From Idea Formation to Evaluation



From Idea Formation to Evaluation



Idea Formation

- > **Engaging Community**
- > **Identifying Need and Data**
- > **What's Your Big Idea?**
- > **Engaging Other Partners**

Idea Formation Guiding Questions

Who you will serve?

- What is the population with the greatest disparities? Where do those disparities come from?
- What is the need? What are the health and racial inequities?
- What data describes or defines the need?

What you will do?

- What is your big idea? How will you address the population's need?
- Why are you the best organization to lead this (as compared to others)?
- How does what you plan to do directly connect to the goals of the Funds?

How you will do it?

- What partners will you engage to achieve your goals? Who else do you need?
- How will you engage members of the community affected by these issues?

Addressing Inequities Guiding Questions

When considering a particular idea to address an inequity, we continuously ask four questions:

**Who
benefits?**

**Who is
harmed?**

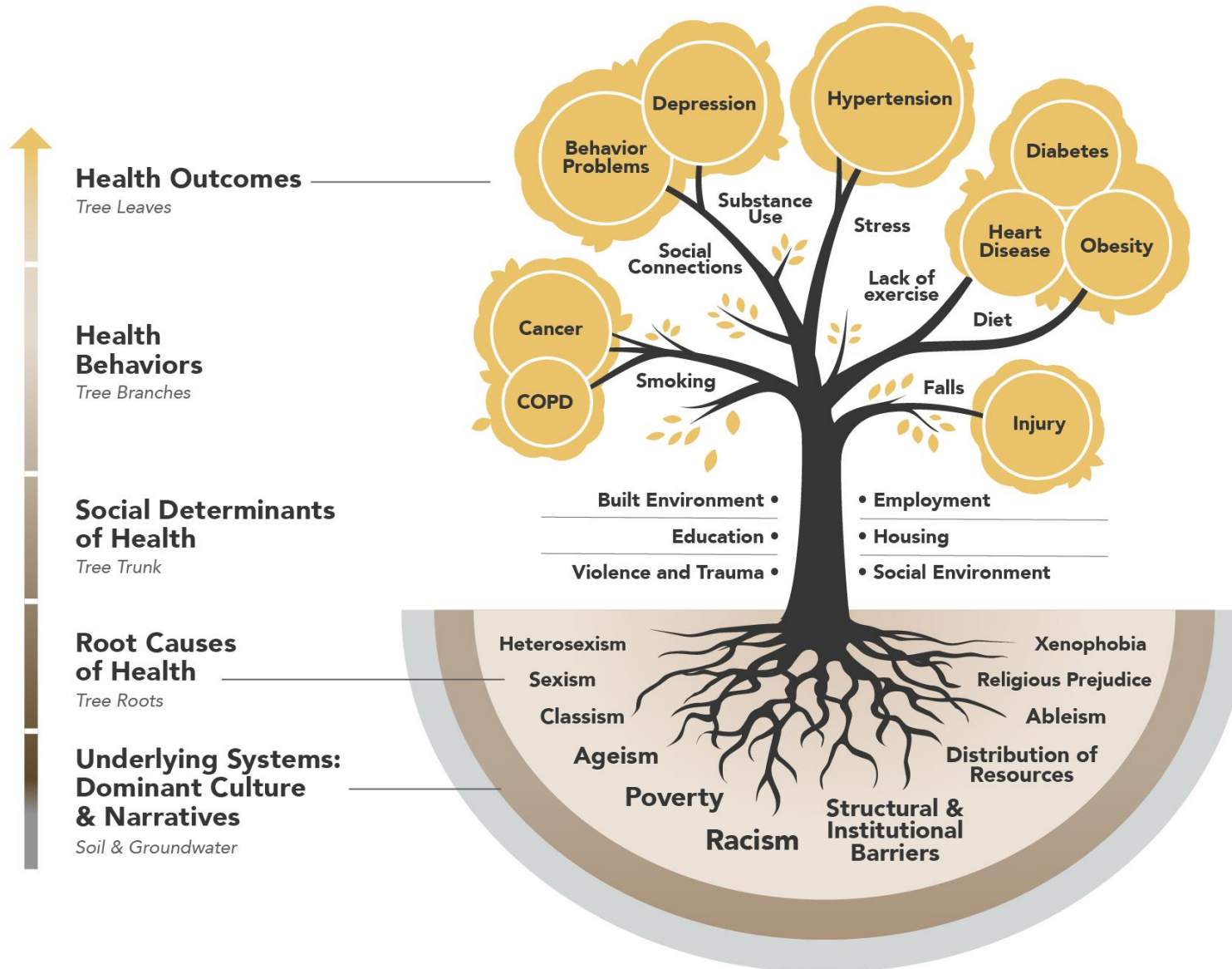
**Who
influences?**

**Who
decides?**

Using Data to Define Your Idea



Data for your Idea



Sources of Health Data

- **Health Surveys**
 - Behavioral Risk Factor Surveillance System (BRFSS), Youth Risk Behavior Survey (YRBS)
- **Disease and Injury Registries**
 - MA Cancer Registry, Weapon-related injury surveillance system, Vital Statistics
- **Clinical Data**
 - Claims data, Emergency Room data, Electronic Health Record (EHR) data
- **Census Data**
- **Community Level**

Health Equity Data

- [National Equity Atlas](#)
- [ChangeLab Solutions](#)
- [RWJF City Health Dashboard](#)
- [Opportunity Index](#)
- Hospitals-Community Benefits reports or Community Health departments
- Local Health Departments
- Primary data
 - Community
 - Other Stakeholders



Resources to Define Community Need

[Population Health Information Tool \(PHIT\)](#): A data portal for Massachusetts health data, maintained by the Massachusetts Department of Public Health.

[Using Data to Tell Your Story](#): Webinar recording by the Community Health Training Institute that describes how to tell a compelling story with health data.

[County Health Rankings](#): A program of the Robert Wood Johnson Foundation and the University of Wisconsin which measure vital health factors by county.

[Community Commons](#): An interactive website maintained by the Institute for People, Place, & Possibility, highlighting maps and health data.



Data Limitations

- Surveys may not include all populations
- Outcomes for specific areas aren't available for some data sets
- Low response rates
- Data is outdated
- Data is generalized



Upcoming Office Hours

- 6/6 2-3pm Community Engagement
- 6/8 1-2pm Budget Walk Through
- 6/13 1-2pm Open Question Time (The last Session before application due date)

Contact Information

Stay in touch:

MACHHAFunds@hria.org



Questions & Answers

