



— Massachusetts —  
COMMUNITY HEALTH AND  
HEALTHY AGING FUNDS

# Massachusetts Community Health & Healthy Aging Funds

Request for Proposal (RFP)

May 2022



# Table of Contents

Background & Review .....	1
Eligibility .....	4
Application & Review .....	5
What are we expected to do if we receive this grant .....	6
How can we learn more .....	6

# Background & Overview

## At-A-Glance



Available Funding	PSE: \$50,000-\$200,000 per year, up to 5 years CHIP: \$10,000 - \$75,000 per year, up to 5 years Healthy Aging: \$10,000 - \$100,000 per year, up to 5 years
Grant Start Date	August 2022
Eligible Applicants	Massachusetts based non-profit 501(c)3 organizations, quasi-governmental organizations and municipalities are eligible to apply.
Eligible Activities	Community-centered approaches that improve population health outcomes, address social determinants of health, and disrupt the root causes of health inequities
Application Deadline	Friday, June 17, 2022, at 11:59PM EST
Contacts	<a href="mailto:MACHHAFunds@hria.org">MACHHAFunds@hria.org</a>
Website	<a href="http://www.mahealthfunds.org/apply">www.mahealthfunds.org/apply</a>

## Background

What are the Massachusetts Community Health & Healthy Aging Funds?

In January 2017, the Massachusetts Department of Public Health (DPH) completed a landmark revision of the Determination of Need (DoN) regulation which led to the creation of the Massachusetts Community Health and Healthy Aging Funds (The Funds). Resources for the Community Health and Healthy Aging Funds are from hospitals, long-term care facilities, and other healthcare entities that are required to contribute to the Funds the Massachusetts Department of Public Health's Determination of Need Program.

[Click here for additional information on the Determination of Need program.](#)

## Purpose

The Funds are an opportunity to reduce health inequities in communities across Massachusetts by addressing the social determinants of health. They represent both a grantmaking and capacity-building resource to assist organizations and communities in addressing the root causes of health inequities, specifically institutional and structural racism.

The Funds focus on addressing health and racial inequities and are guided by the following principles:

- The Social Determinants of Health (SDoH) account for significant variation in health outcomes.
- Policies, systems, and social/physical environments are historically based in structural and institutional racism and other forms of oppression.
- Structural and institutional racism and other forms of oppression need to be understood and disrupted to eliminate inequities in population health outcomes and the social determinants of health (SDoH).



The vision for the Community Health funding streams is that: all Massachusetts residents have an equitable opportunity to achieve the highest possible quality of life. This vision aligns with DPH's goal to eliminate health inequities through addressing the social determinants of health.

The vision for the Healthy Aging funding stream is to contribute to equitable systems across sectors affecting community-level physical environments and social and economic conditions ultimately leading to a better quality of life and health outcomes for older adults as they age in Massachusetts. This vision aligns with DPH's and the Executive Office of Elder Affairs' (EOEA) commitment to advancing health equity and having a positive impact on the social determinants of health.

To work towards realizing these visions, the Funds will invest in community-centered approaches that are intentional in addressing the root causes of inequitable health outcomes.

## Overview

The MA Community Health & Healthy Aging Funds seek ideas that work to identify, understand, and address Root Causes of Health as the foundation for strategies that change community conditions and positively impact health outcomes (see Figure 1).

MA Community Health & Healthy Aging Funds will distribute funding in three areas (additional information about each funding stream can be found in the Appendices)

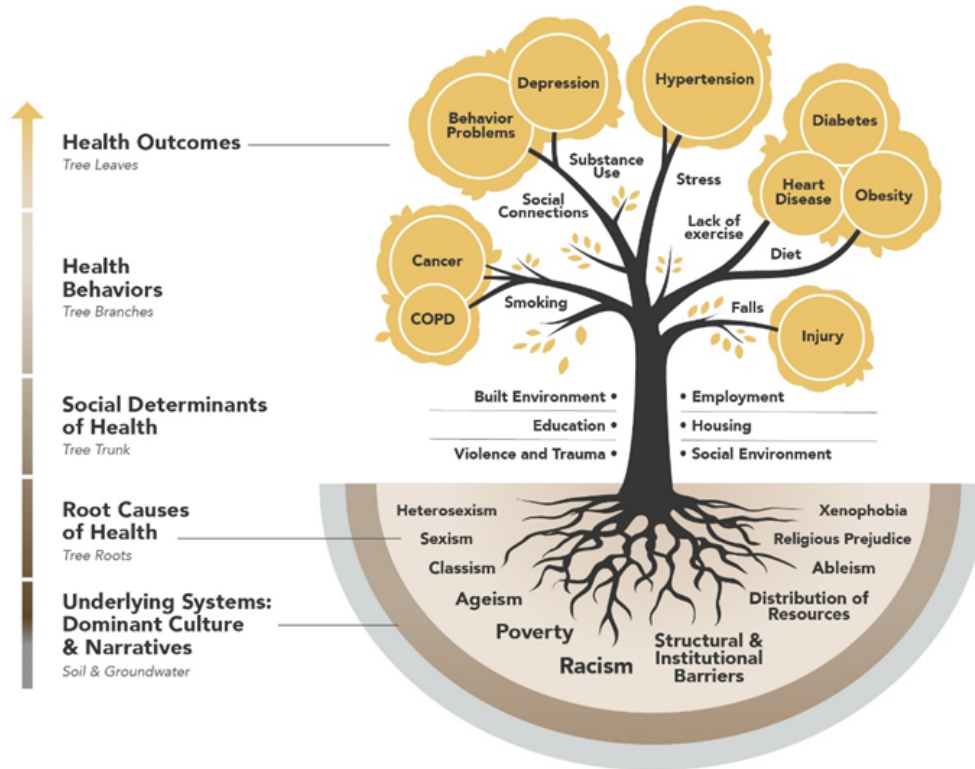
- Policy, Systems, and Environmental change strategies (PSE)
- Regional Community Health Improvement Planning Processes (CHIP)
- Healthy Aging

The PSE and CHIP funding streams are looking to invest in approaches that will:

- Improve population health outcomes in communities outside of Boston, that have not benefitted historically and routinely from previous local DoN community health funding and have high rates of health inequities. The Funds place an emphasis on four health outcomes as defined by DPH: substance use disorders, mental illness/mental health, housing stability/homelessness, and preventing chronic disease with a focus on cancer, heart disease, and diabetes.
- Address six social determinants of health, prioritized by the DPH Commissioner that can change community level conditions to create more opportunities for healthy living including the Built/Physical Environment, Education, Employment, Socio-Cultural Environment, Housing, and Violence & Trauma.
- Disrupt the Root Causes of Health Inequities-- Institutional and Structural Racism and other forms of oppression – and its effects on well-being and health outcomes. The Funds are using a Leading with Race and Racism approach which recognizes that people of color in Massachusetts have historically and consistently had less opportunity to lead a healthy life. The Funds also recognize that Root Causes can create barriers to health for all types of populations. We encourage communities to Lead with Race and Racism explicitly but not exclusively.



Figure 1. The Health Tree: Connecting Health Outcomes to Root Causes



The Healthy Aging funding stream is looking to invest in approaches that will:

- Lead to measurable short, intermediate, and long-term outcomes in areas related to policy, systems, and environmental change approaches, changes in community-level conditions, and changes in population health for older adults across the Commonwealth.



# Eligibility



## Who is Eligible to Apply?

Massachusetts based non-profit 501(c)3 organizations, quasi-governmental organizations and municipalities are eligible to apply.

For this round of funding, the Policy, Systems, and Environmental Change (PSE) and Community Health Improvement Planning (CHIP) funding streams will prioritize funding support to communities outside of Boston, that have not historically and routinely benefitted from previous local DoN community health funding and have high rates of health inequities. Strategies may focus on geographic or population-based communities at the local, regional, or statewide levels. We will also accept applications from agencies and organizations geographically based in Boston who are interested in doing health and racial equity work statewide or in communities outside of Boston. For additional information click [here](#).

For this round of funding, the Healthy Aging funding stream will prioritize funding support to Gateway Cities and rural communities that have not routinely benefitted from previous local DoN community health funding and have high rates of health inequities. Strategies may focus on geographic or population-based communities at the local, regional, or statewide levels. [For additional information click here.](#)

In addition, this cycle will prioritize:

- Community-based organizations where staff and leadership are representative of the populations they serve
- Populations not widely represented in the current awardee cohort, including:
- Groups disproportionately impacted by COVID-19 and including:
  - Groups disproportionately impacted by COVID-19 and including Black, Latinx, Asian, and Tribal/Indigenous populations, people for whom English is not their first language, people with disabilities, people who identify as LGBTQ+, and people with mental illness and/or substance use disorder
  - Groups located in and serving Barnstable (Cape and Islands), Norfolk, Plymouth, and Bristol Counties, the Merrimack Valley, and southern Worcester County
  - Groups addressing Social Determinant of Health (SDoH) areas of Education, Employment, and Violence/Trauma

If you are looking for more information about local DoN community health initiatives in Boston, please email [MACHHAFunds@hria.org](mailto:MACHHAFunds@hria.org).

# Application & Review



## How do I apply?

Submit your proposal through the online form by Friday, June 17, 2022, at 11:59pm EST. [Please click here to submit your proposal.](#) The website leads to an online portal which will ask you to complete:

- Eligibility Questionnaire
- Basic Organization and Contact Information
- Application Questions
- Attachments

To return to an already started application, visit your [Account Page](#). For technical and logistical questions related to accessing the online grantmaking portal, or if your organization encounters any barriers to submitting your proposal through the portal, please contact [MACHHAFunds@hria.org](mailto:MACHHAFunds@hria.org).

## How will this proposal be reviewed?

All completed submissions will be reviewed by a statewide review committee. Applications will be assessed based on the following criteria:

- **Equity:** Demonstration that the idea is addressing a geography/population experiencing high rates of inequities; Demonstration that the ideas and approaches are community led, particularly by populations experiencing inequities, etc.
- **Impact:** Demonstration of logic connecting the approach to addressing the root cause → SDoH → Health Outcome.
- **Collaboration:** Demonstration of multi-sector partners with diverse perspectives.
- **Feasibility:** Likelihood of resources supporting success.

## What happens after I submit my application?

Applicants will be notified of the status of their submission approximately 4-6 weeks after the final submission deadline.





## What are we expected to do if we receive this grant?

If your organization is selected to receive a grant, HRiA staff will work with you and your staff/volunteers/board to complete:

- **Reporting** - Grantee will remain in communication with HRiA and partners throughout the award period to provide feedback, success stories, lessons learned, and status updates. Grantee will share end of year progress each award year, summarizing work completed to date. In addition, grantee will submit detailed financial expenditures each year. Grantor will establish formal deadlines.
- **Capacity Building** - Throughout the duration of the award, HRiA will provide opportunities to build capacity of awardees, community members, and Funds staff. Awardees are expected to attend and participate in as many of these events as possible.
- **Evaluation** - Grantee will collect and report data metrics as developed in an evaluation plan co-created by the Grantee and HRiA, including:
  - o Measuring progress of PSE change strategies
  - o Measuring community engagement in their activities
  - o Measuring changes in racial equity
  - o Collecting data at the community level
  - o Providing data, participating in one regional gathering OR annual site visit, and completing annual reporting. We anticipate site visits will begin in year two of the award.

## How can we learn more?

- If you have questions about the application process, please contact [MACHHAFunds@hria.org](mailto:MACHHAFunds@hria.org)
- Learn more at: [www.mahealthfunds.org](http://www.mahealthfunds.org).
- A live funding announcement webinar will be held on Monday, May 9, 2022, from 2-3:30 PM. [Please click here to register for the webinar.](#)
- HRiA will host drop-in office hour sessions during which applicants can ask questions, and training sessions to support applicants throughout this process.



