



— Massachusetts —
COMMUNITY HEALTH AND
HEALTHY AGING FUNDS

Training: Developing and submitting an
application for PSE

May 26, 2022



Introductions



Alberte Altine-Gibson
*Director
Massachusetts
Community Health and
Healthy Aging Funds*



Emily Breen
*Program Officer – PSE
Massachusetts Community
Health and Healthy Aging
Funds*



Chenchen Hensz
*Program Coordinator
Massachusetts Comm
unity Health
and Healthy Aging
Funds*

House Keeping Items

- If you have any **logistical or content questions**, please type them into the chat box.
- Close Captions/transcription is available. Click the **CC/Live Transcript** button on the bottom of your screen.
- This session will be recorded.

Agenda

Topic	Time
Approach & Application Questions	20 minutes
Your Questions	40 minutes

Funds Purpose

We are committed to disrupting and removing barriers to health through community-centered policy, systems, and environmental change approaches.

We provide the resources to enhance the capacity of multi-sector collaboratives to authentically engage residents and work together so that everyone has the highest quality of life possible in Massachusetts.

What's a PSE Approach?

Policy, systems, and environmental change (PSE) strategies are a way of making sustainable, lasting change within a community to make healthy choices practical and available to all residents.

Policy Change

Policy change includes the passing of laws, ordinances, resolutions, mandates, regulations, or rules.

Government bodies (federal, state, or local), park districts, healthcare organizations, worksites, and other community institutions (schools, jails, daycare centers, etc.) all make policies.

It is important to note that a policy must be implemented and enforced to make a change.

Housing example: Implementing a smoke free housing policy to prevent secondhand smoke and other smoking related health issues.

Systems Change

Systems change involves transforming and redesigning the practices and structures within organizations, institutions, or networks to promote better health outcomes.

Often includes changes made to the policies, processes, power structures, and relationships *within* an organization that determine how resources and services get distributed. Systems change can also be implemented *across* organizations.

Systems change and policy change often work hand-in-hand.

Housing example: Creating local affordable housing coalitions

Environmental Change

Environmental change is an actual transformation of the physical environment. It can be as simple as installing bike signage on already established bike routes or as complex as sidewalk installation and pedestrian friendly intersections to promote walking and biking among all citizens.

Environmental change, when paired with sustainable systems and policy improvements, can create the most lasting change.

Housing example: Renovating an old building to include affordable housing units and other community resources

Active Living Example

Program

- Hosting a community bike ride

Policy

- Passing a municipal Complete Streets bylaw or ordinance to ensure community roads are designed to be safe and accessible for all users, including pedestrians, bicyclists, motorists, and transit riders of all ages and abilities.

Systems

- Creating a system for how municipal agencies work together to implement the Complete Streets Policy, ensuring that prioritization plans improve conditions and build infrastructure for all municipal neighborhoods.

Environmental

- Using funding from the Complete Streets Funding Program to develop safe walking, biking, and transit routes throughout communities.

Food Access Example

Program

- Hosting a farmers market

Policy

- Adopting a local Urban Agriculture ordinance or a policy to enable the use of vacant lots for activities such as community gardens.

Systems

- Creating an urban agriculture commission made up of City representatives, such as public health staff, economic development staff, planners, residents, and community partners and members, to advise the City on creating and implementing urban agriculture policies.

Environmental

- Municipalities implementing a city-wide community gardens program, making open space available for residents to grow fresh fruits and vegetables.

Addressing Inequities Guiding Questions

When considering a particular idea to address an inequity, we continuously ask four questions:

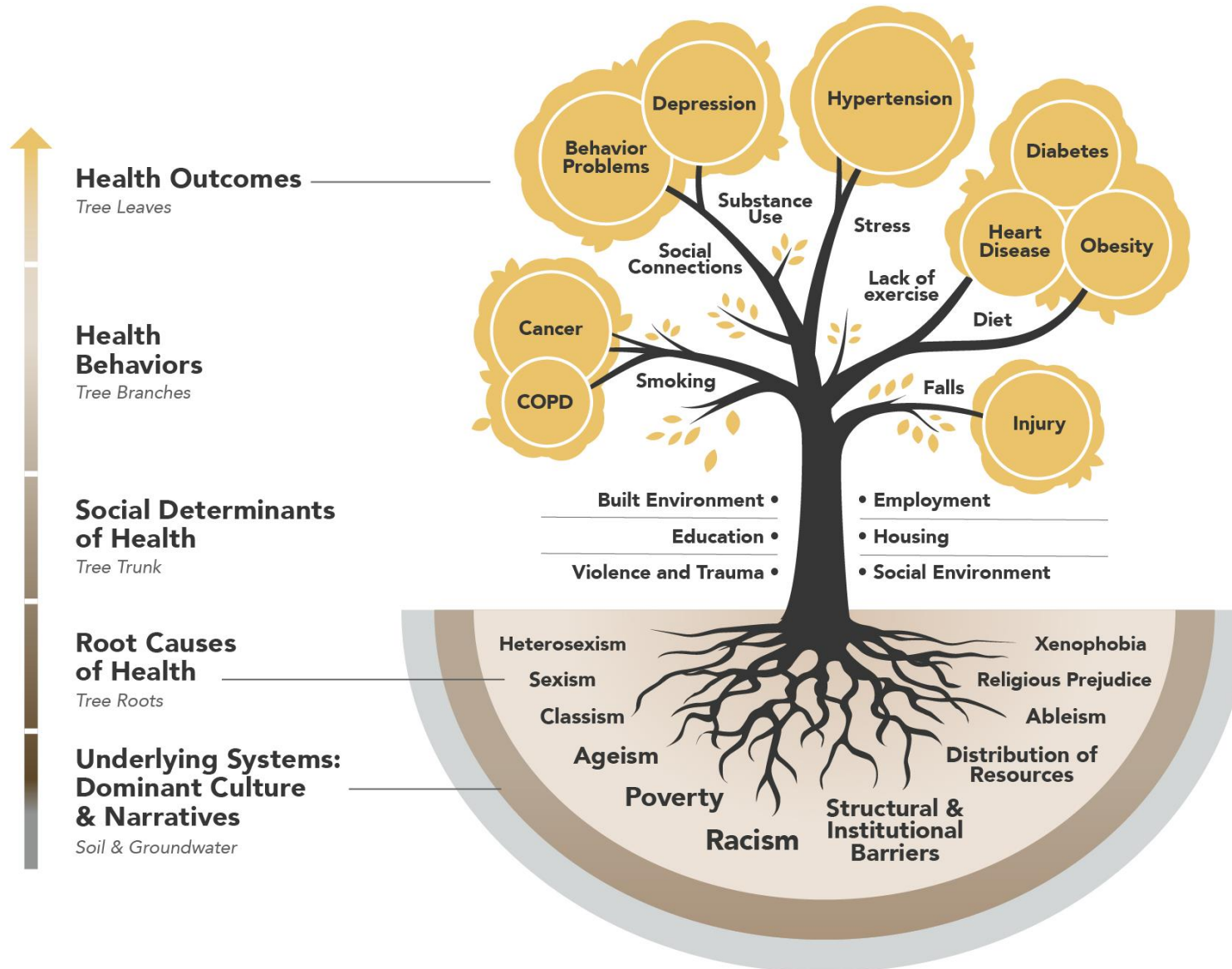
**Who
benefits?**

**Who is
harmed?**

**Who
influences?**

**Who
decides?**

What do we mean when we talk about health?



Program Approach V.S PSE Change Approach

A Programs Approach



Hosting a community bike ride



Having an "open gym night"
at a local school






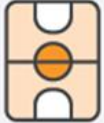




Working with a corner store to
become a designated Healthy Market



Opening and maintaining
a community garden

How do you make each program
approach into a PSE change
approach?

Program Approach V.S PSE Change Approach

A Programs Approach	VS.	A PSE Change Approach
 Hosting a community bike ride		 Implementing a Complete Streets policy to ensure community roads are designed to be safe and accessible for all users
 Having an “open gym night” at a local school		 Implementing a town-wide Joint Use Agreement enabling community members to have access to the school’s gym and fields when school is not in session
 Working with a corner store to become a designated Healthy Market		 Creating a city-wide healthy retail program that supports food retailers to offer a variety of products and fresh, affordable healthy foods
 Opening and maintaining a community garden		 Passing a municipal urban agriculture ordinance or policy which allows residents to use space for community gardens

Source: [Mass in Motion – Policy, Systems, and Environmental Change](#)

Other Resources

- MA Community Health and Healthy Aging Funds [Capacity Building Opportunities & Resources](#)
- Community Health Training Institute: [Improving Community Health through Local Policy Change](#)
- Community Commons [Introduction to Policy, Systems, and Environmental Change](#)

How to find the PSE information on our website

The screenshot displays the MAHealthFunds.org website. On the left, a navigation menu is open, showing options: "About the Funds", "Massachusetts Community Health Fund" (highlighted with a red box), "Massachusetts Healthy Aging Fund", "About the Team", "Contact Us", and "ABOUT THE FUNDS" (with a blue arrow icon). A blue arrow points from the "Massachusetts Community Health Fund" menu item to the main content area. The main content area features a paragraph about the 2017 revision of the Determination of Need (DoN) regulation, followed by a blue arrow pointing to a section titled "The Funds invest significant resources...". Below this, a list of three funding opportunities is shown, with "Policy, Systems, and Environmental Change Approaches" highlighted in a red box. A blue arrow points from this list to a detailed description of PSE change approaches. This description includes a list of three types of approaches: "Policy change approaches", "Systems change approaches", and "Environmental change approaches". A "Learn more" link is highlighted in a red box at the end of the paragraph. A browser address bar at the top right shows the URL "https://mahealthfunds.org/policy-systems-environmental-change-approaches/".

MAHealthFunds.org

ABOUT THE FUNDS ▼

About the Funds

Massachusetts Community Health Fund

Massachusetts Healthy Aging Fund

About the Team

Contact Us

→ ABOUT THE FUNDS

In January 2017, the Massachusetts Department of Public Health (DPH) completed a landmark revision of the Determination of Need (DoN) regulation. The revised regulation authorized the creation of the Massachusetts Community Health and Healthy Aging Funds.

The Funds invest significant resources in Massachusetts communities to improve population health outcomes through innovative and sustainable approaches that bring together a variety of people and partners.

Three funding opportunities make up the Massachusetts Community Health and Healthy Aging Funds:

- Policy, Systems, and Environmental Change Approaches
- Community Health Improvement Planning (CHIP) Processes
- Healthy Aging

For more information about the Massachusetts DoN program, click [here](#).

The Massachusetts Community Health and Healthy Aging Funds focus on policy, systems, and environmental (PSE) change approaches.

- **Policy change approaches** may include a law, regulation, procedure, administrative action, incentive, or voluntary practice by governments and other institutions.
- **Systems change approaches** may include change that impacts all elements, including social norms of an organization, institution, or system.
- **Environmental change approaches** may include change of the physical, social, or economic environment.

These PSE change approaches are different from direct service or programmatic approaches. The Community Health Fund does not fund initiatives that focus only on direct service delivery. PSE change approaches make long-lasting changes within communities to make healthy choices practical and available to all residents. [Learn more](#) about PSE change approaches from the DPH program, Massachusetts Department of Public Health.

https://mahealthfunds.org/about-the-funds/

https://mahealthfunds.org/policy-systems-environmental-change-approaches/

Visit Our Website

ABOUT THE FUNDS ▼

WHAT WE FUND ▼

APPLY ▼

RESOURCES ▼



Massachusetts Community Health & Healthy Aging Funds

www.mahealthfunds.org/apply

Contact Information

Stay in touch:

MACHHAFunds@hria.org



Questions & Answers

