



# **Massachusetts Community Health & Healthy Aging Funds**

## **Policy, Systems, and Environmental Change Funding Announcement Webinar**

August 13, 2019

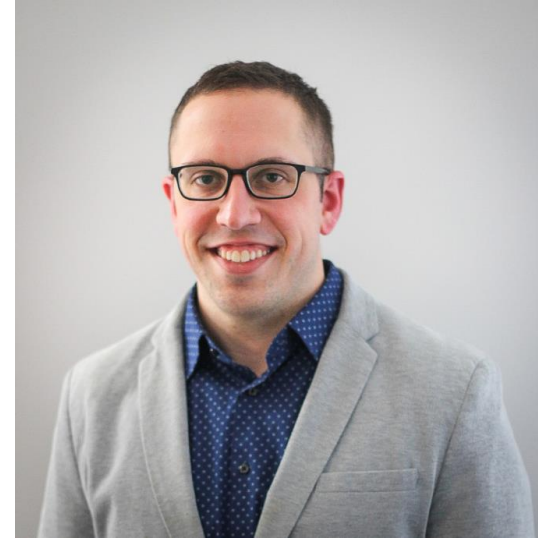
# Introductions

---



**Nineequa Blanding**

Health Resources in Action  
Vice President, Grantmaking  
Director, Community Health &  
Healthy Aging Funds



**Kevin Myers**

Health Resources in Action  
Program Officer



# Objectives

---

- Understand the funding opportunity, due dates, and available technical assistance
- Understand the following priorities for the Fund and their importance in advancing population health
  - Racial and Health Equity
  - Policy, Systems, and Environmental Change Approaches
- Share through polls your organization's existing work and interest in the funding opportunity, as well as technical assistance needs



# Agenda

---

Topic	Time
Background and Rationale	20 minutes
The Approach	15 minutes
The Grantmaking Process	15 minutes
The Opportunity and Next Steps	10 minutes



# Housekeeping

---

- If you have any **logistical questions** related to this webinar, please type them into the chat box.
- If you have **content-related questions**, please type them into the question box. Answers to all questions raised will be available on the Frequently Asked Questions page on our website later this month.
- The webinar recording, slides, and transcript will also be available.
- To make this webinar accessible we will communicate all details on the slides.




# Background and Rationale

---




# Introductions

---



**Massachusetts  
Department of  
Public Health  
(MDPH)**

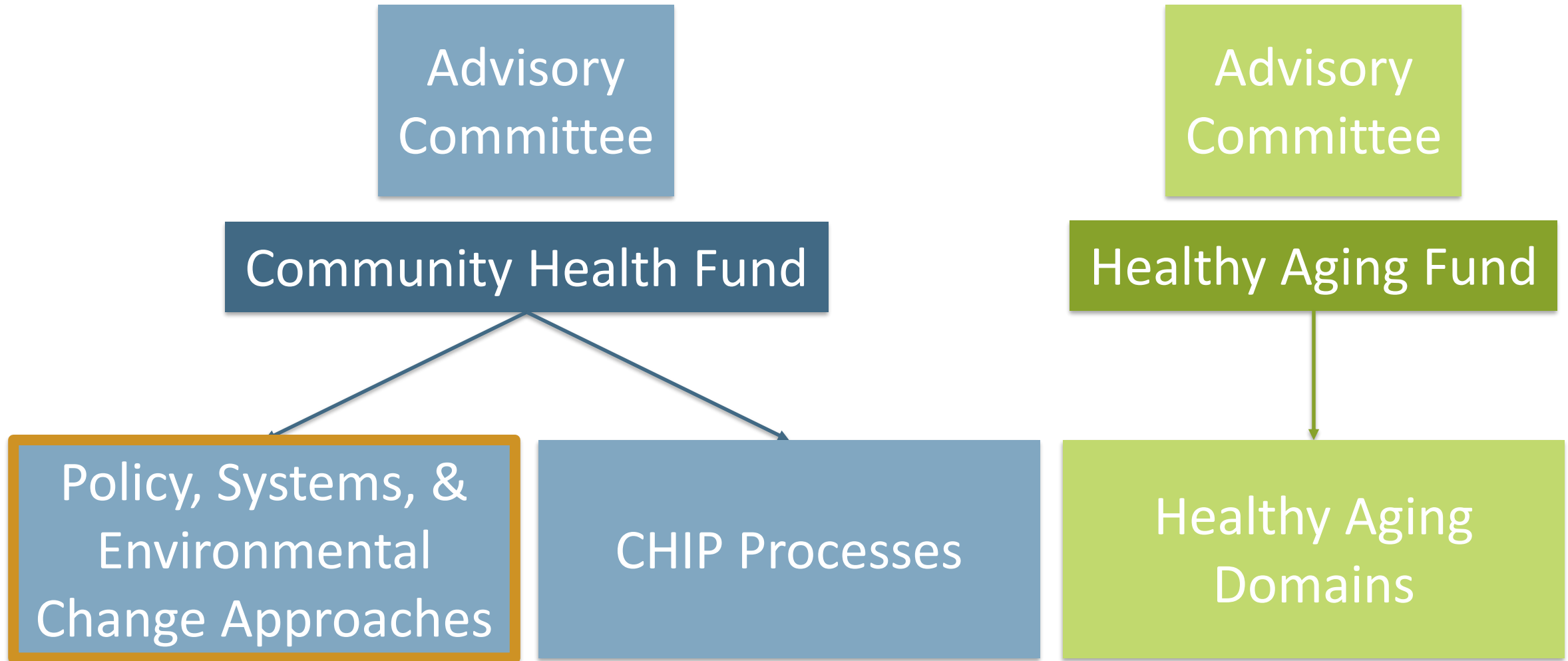


**Health  
Resources in  
Action (HRiA)**



# Two Funds and Three Funding Opportunities

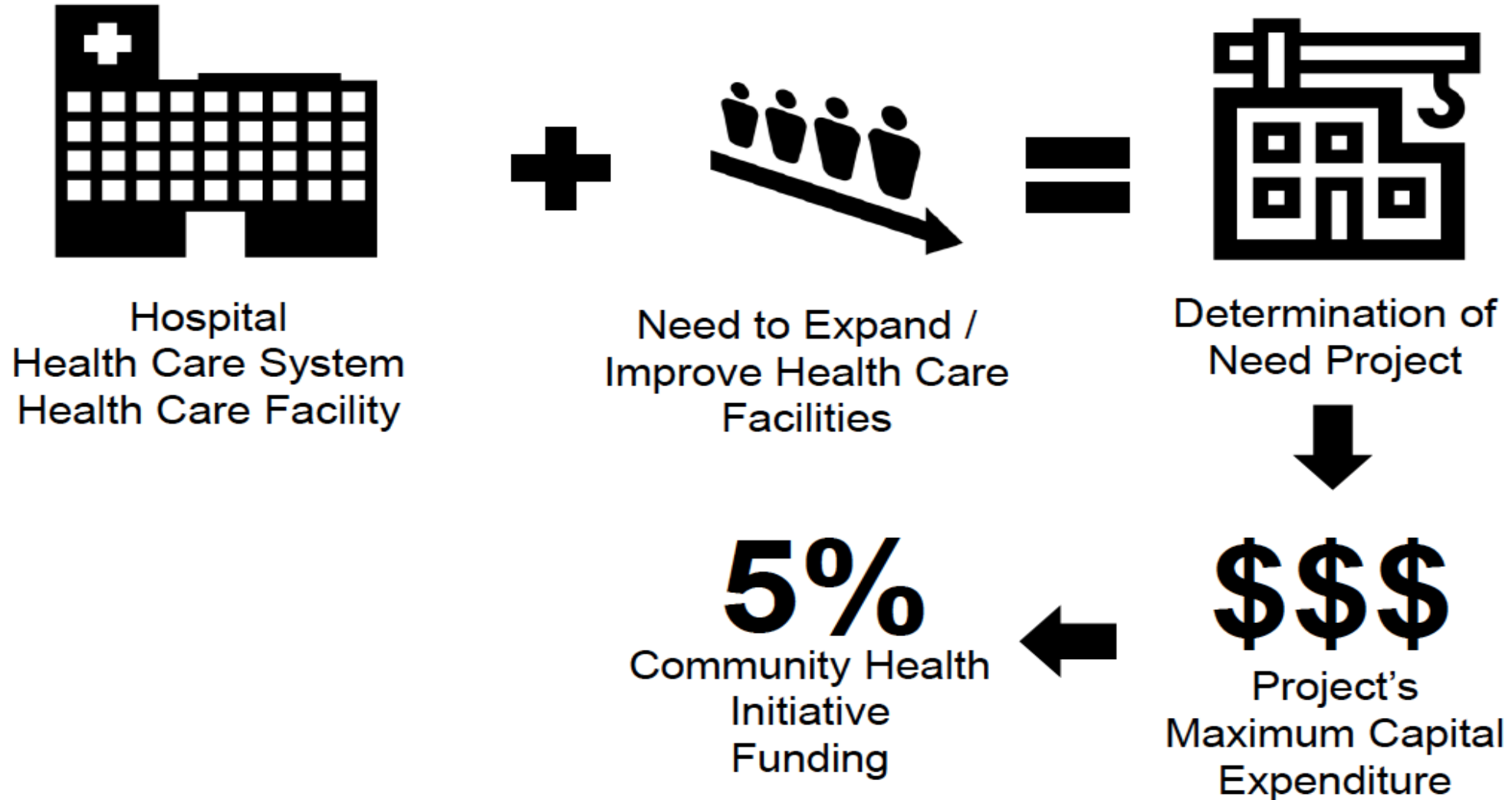
---





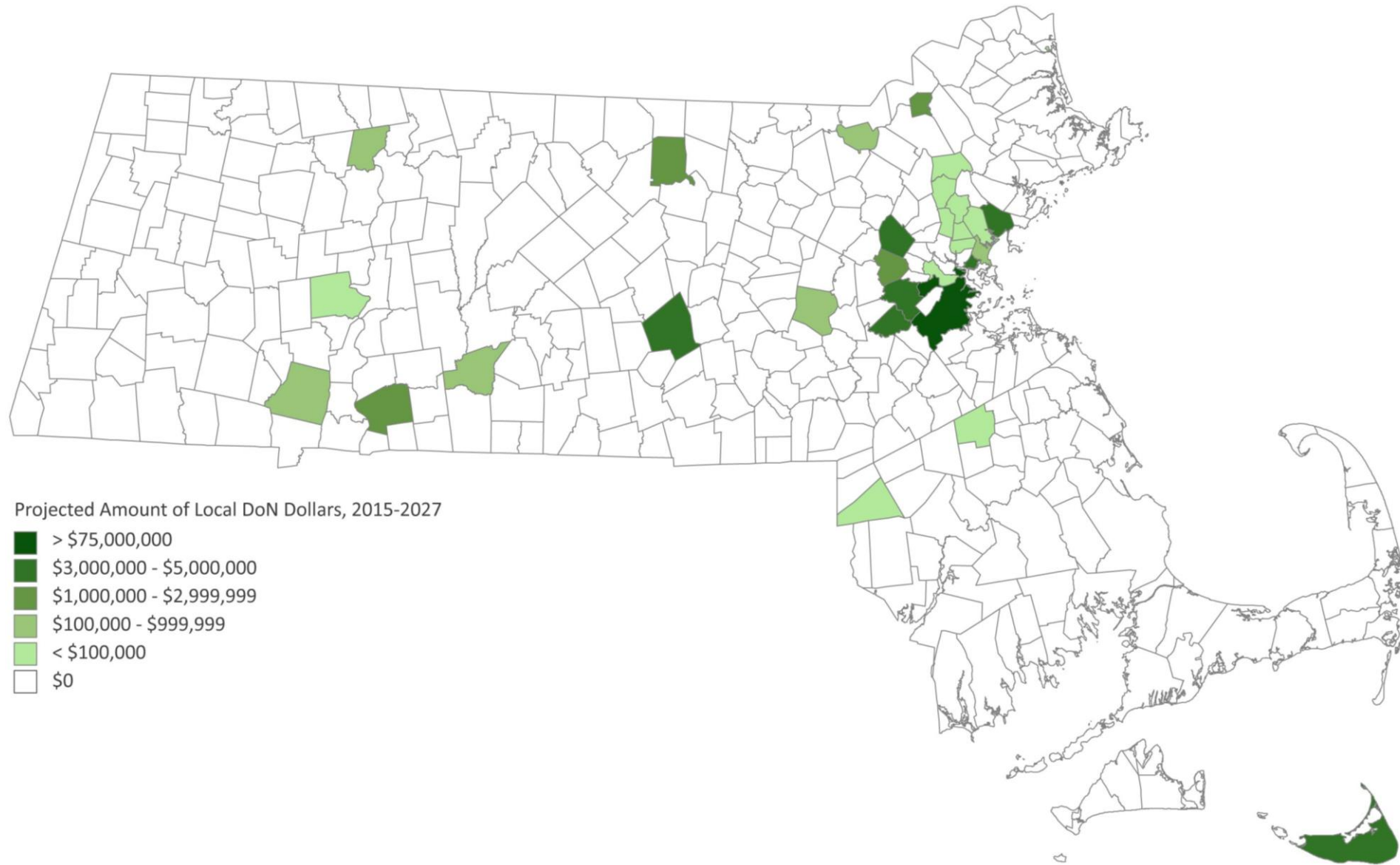
# Determination of Need Program

---



# Projected Amount of Local DoN Dollars, 2015-2027

---

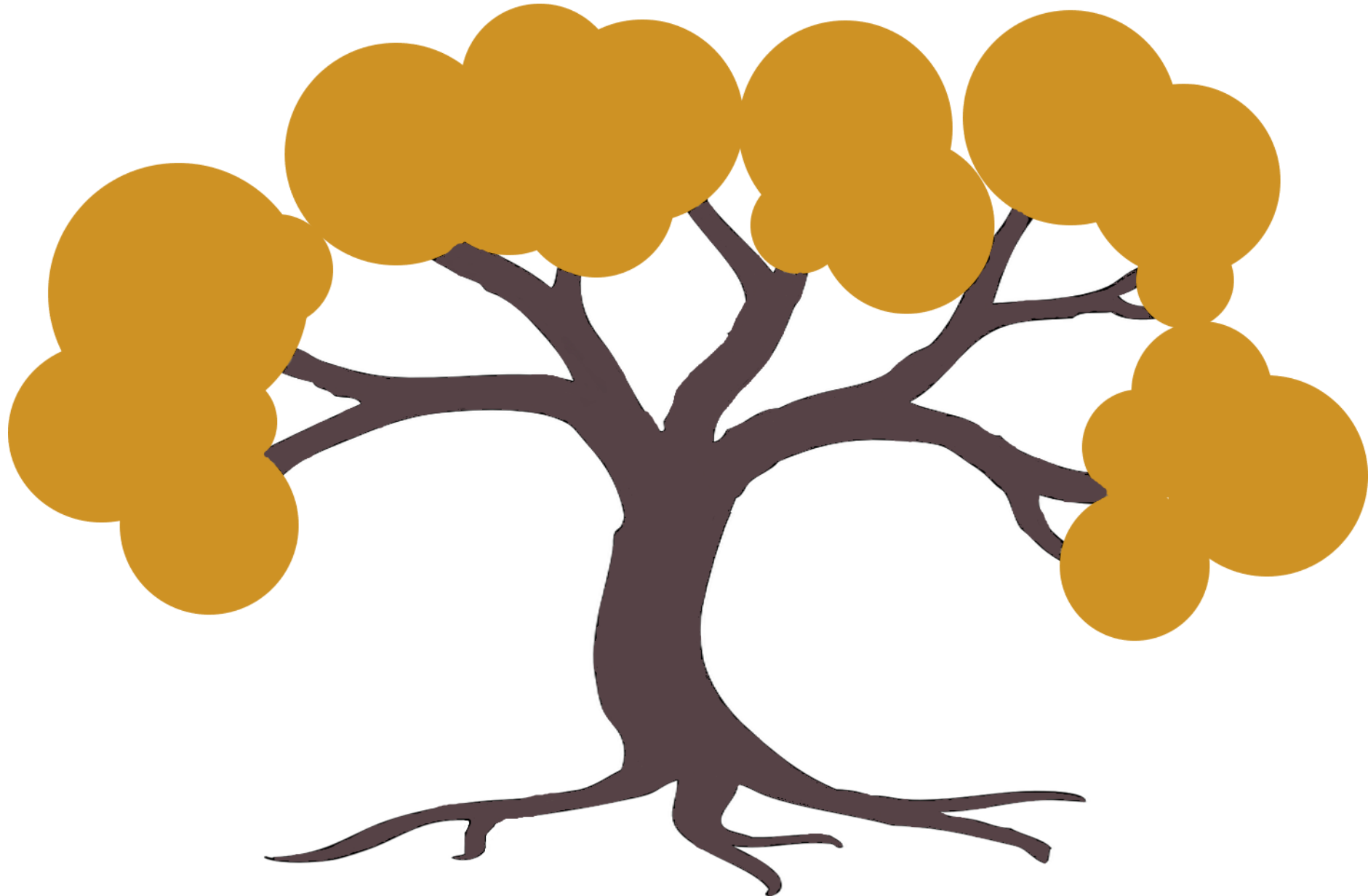




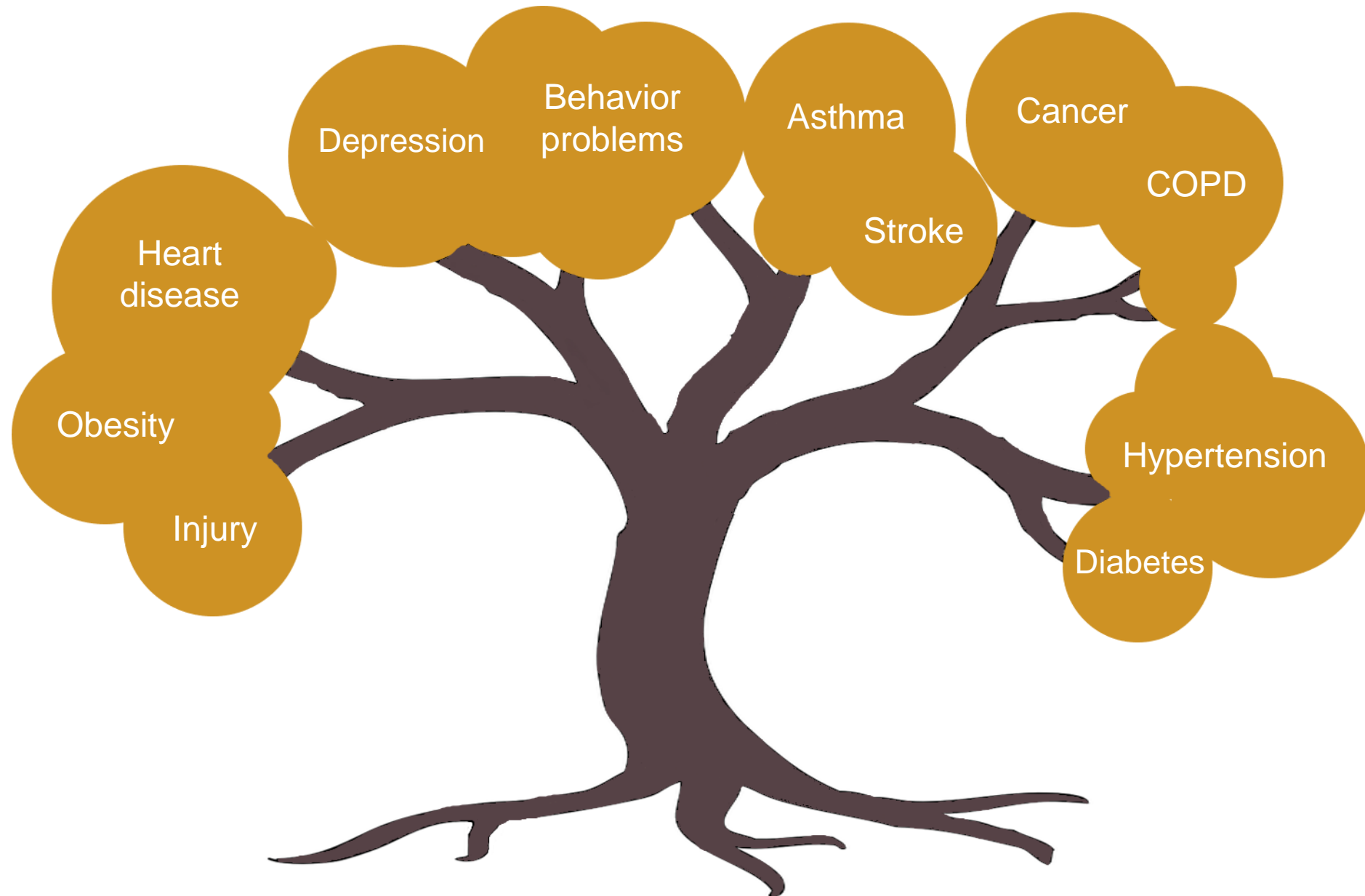
80%

of what influences your life  
expectancy happens  
outside of the healthcare  
system

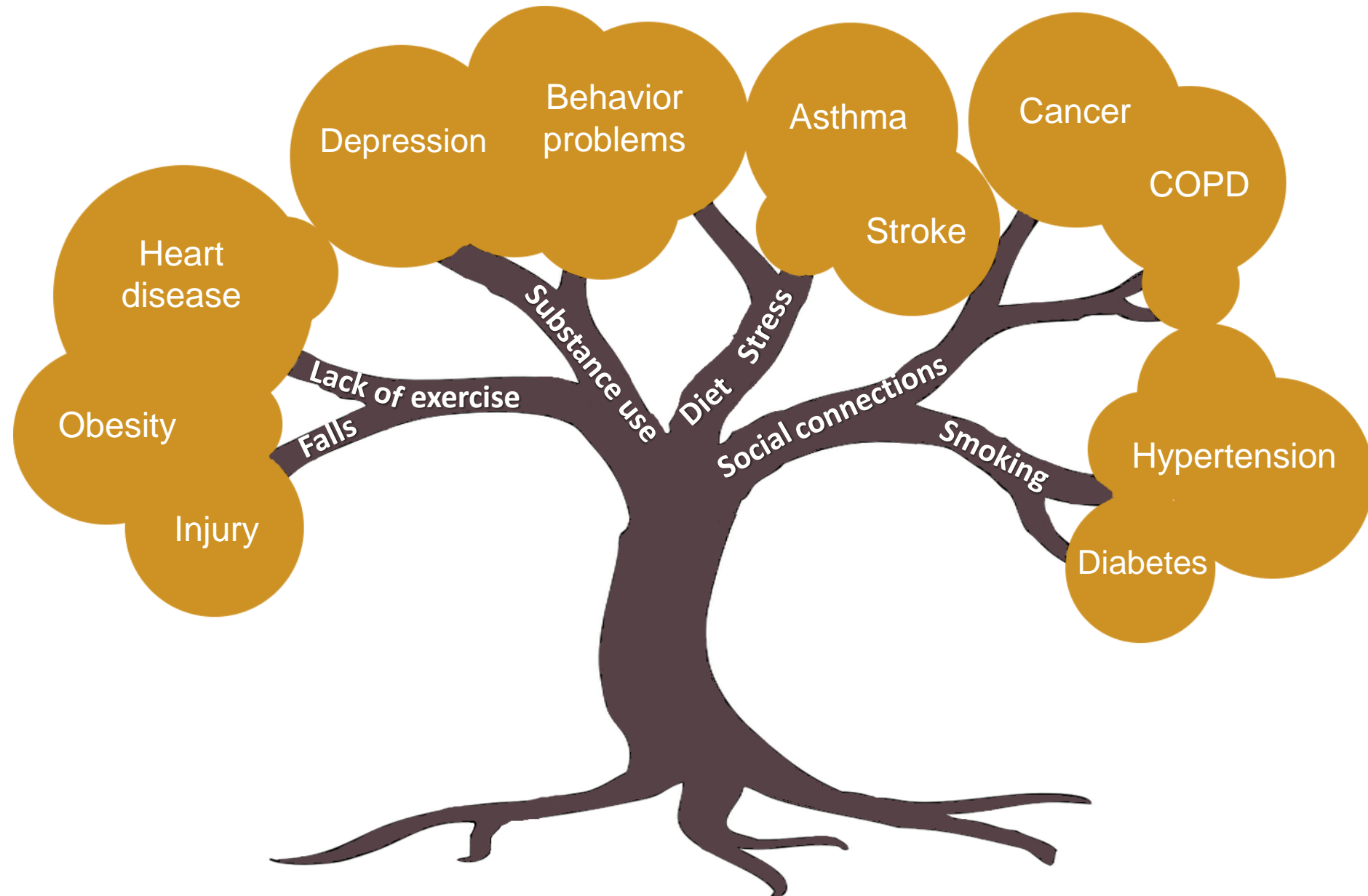
What do we mean when we talk about health?



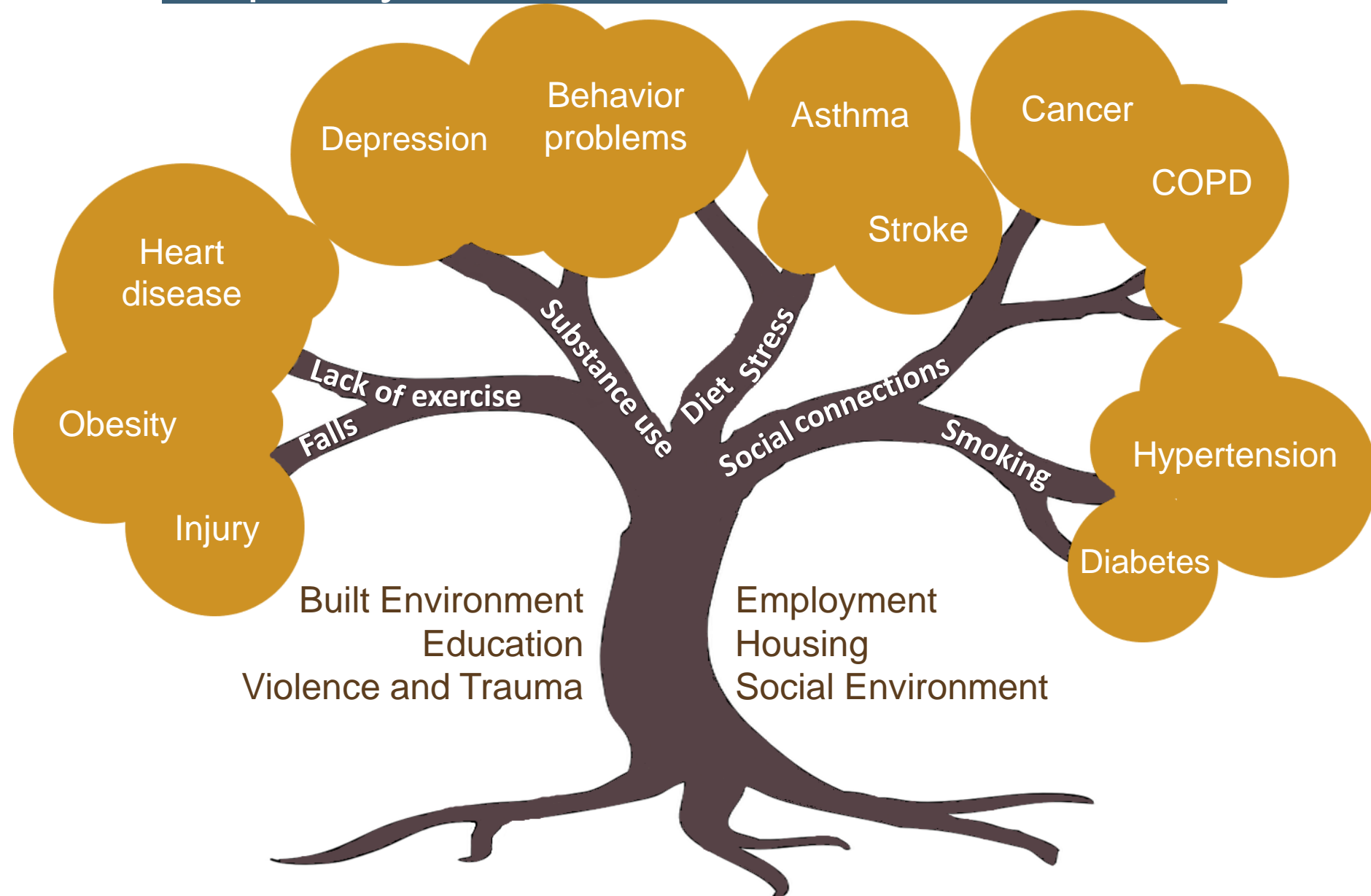
# Health outcomes...



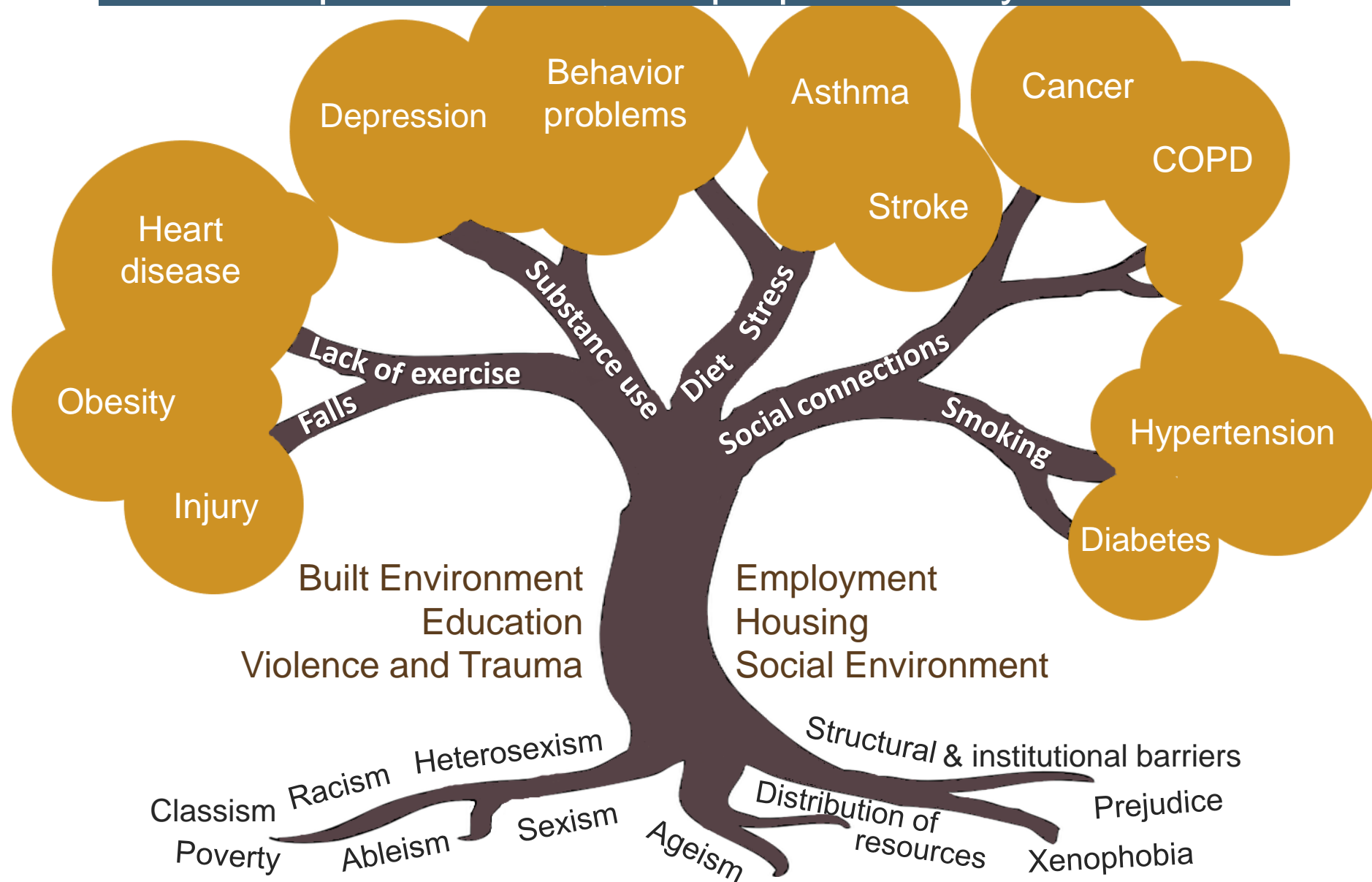
# Health outcomes... **influenced by health behaviors...**



# Health outcomes... influenced by health behaviors... shaped by the social determinants of health...



Health outcomes... influenced by health behaviors...  
shaped by the social determinants of health...  
health inequities created and perpetuated by root causes.





# Key Definitions

---

## Disparities or Inequalities

Differences between individuals or population groups

## Inequities

Differences that are unnecessary and *avoidable*, but are also unfair and unjust



# Defining Health Equity

---

**Health Equity** - everyone has a fair and just opportunity to be as healthy as possible. To achieve this, we must remove obstacles to health — such as poverty, discrimination, and deep power imbalances — and their consequences, including lack of access to good jobs with fair pay, quality education and housing, safe environments, and health care.\*

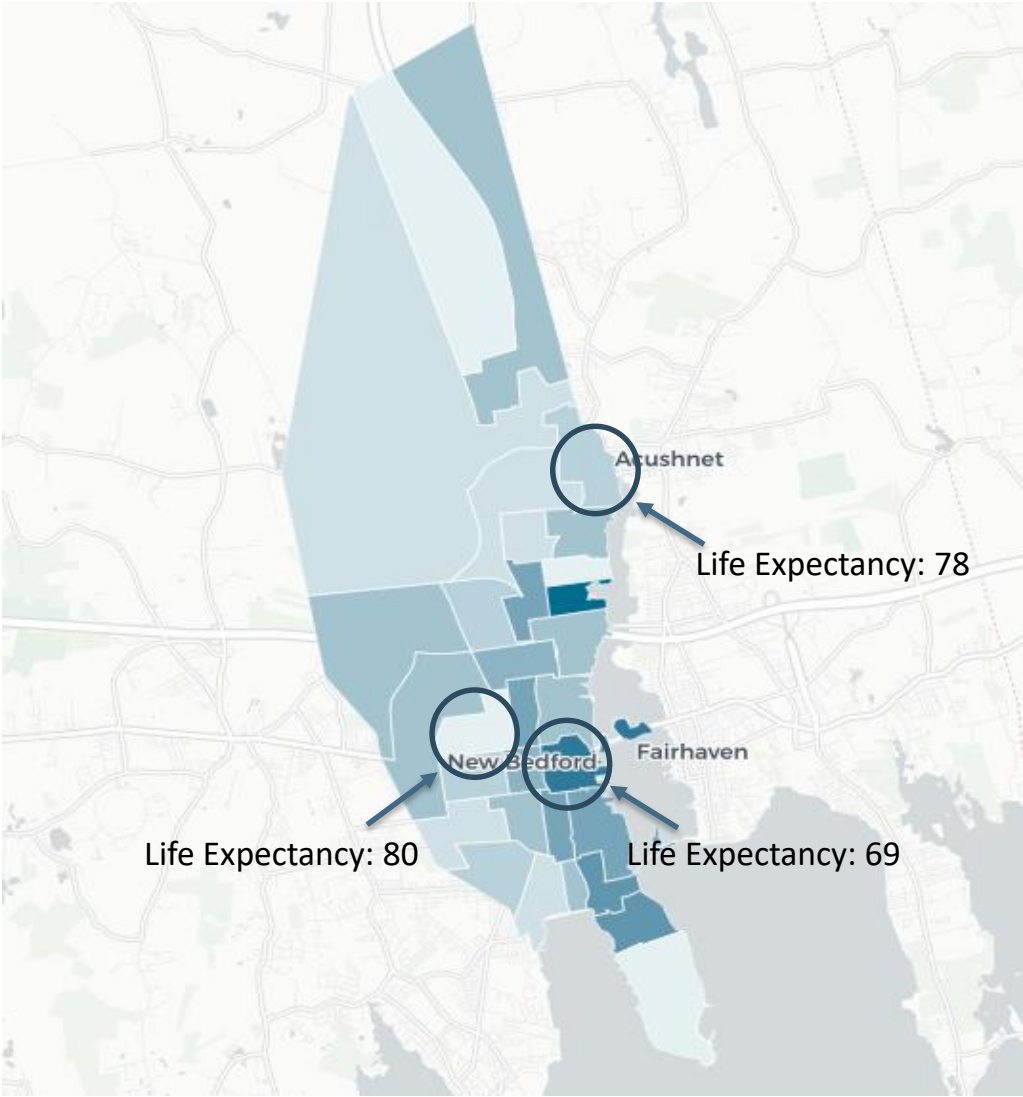
“Of all the forms of inequality, injustice in health is the most shocking and the most inhuman because it often results in physical death.”

\*Source: Human Impact Partners, Health Equity Guide  
<https://healthequityguide.org/about/defining-health-equity/>

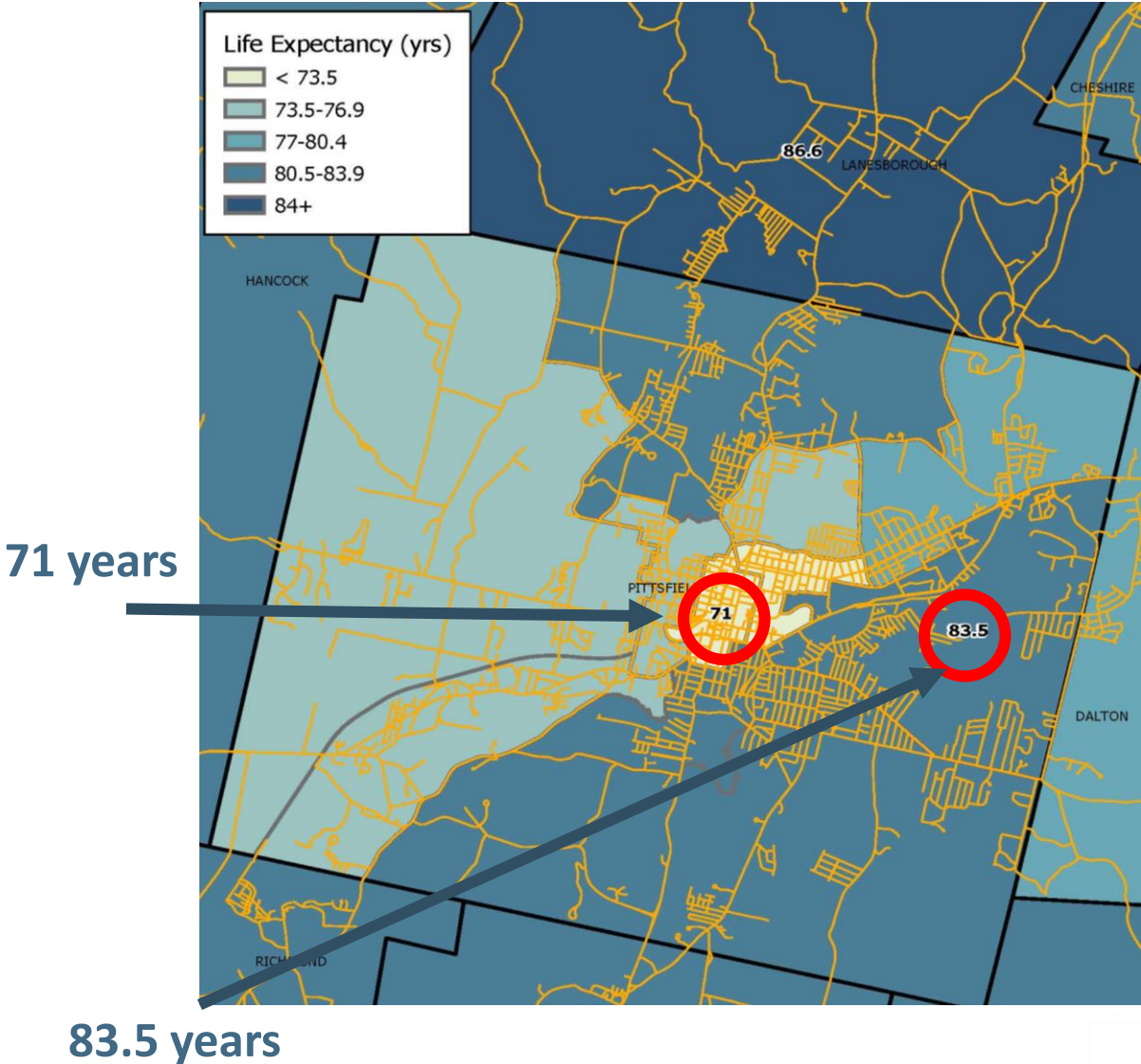
**Martin Luther King Jr.**



# Life Expectancy in New Bedford and Pittsfield



Data source: City Health Dashboard.



Source: Berkshire Regional Planning Commission

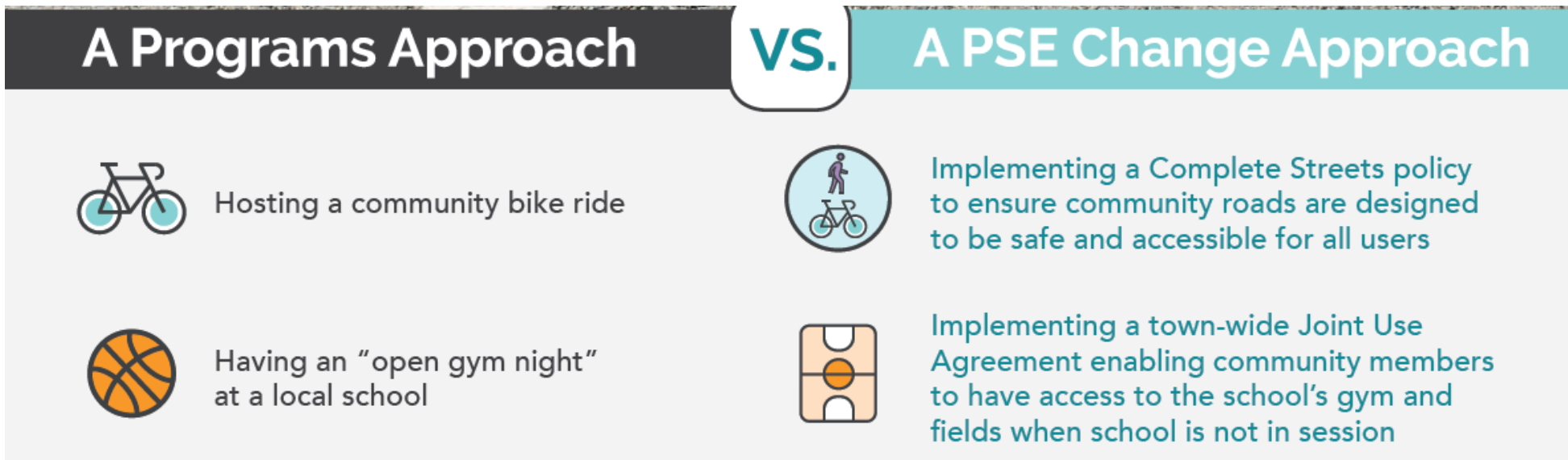
# The Approach

---



# Policy, Systems, & Environmental (PSE) Change Approaches

---



# Focus, Strategies, and Outcomes of the Community Health Fund

---

**Focus:** Activities that benefit communities outside of Boston that have not historically and routinely benefited from previous local Determination of Need (DoN) community health funding AND have high rates of health inequities.

## **Strategies: Multi-year investments and capacity building**

- Policy, systems, and environmental change approaches
- Community health improvement planning processes
- Evaluation process for improved community health initiatives



## **Outcomes**

- Disruption of structural and institutional racism and other forms of oppression
- Improved population health outcomes
- Improved cross-sector/community-centered collaboration

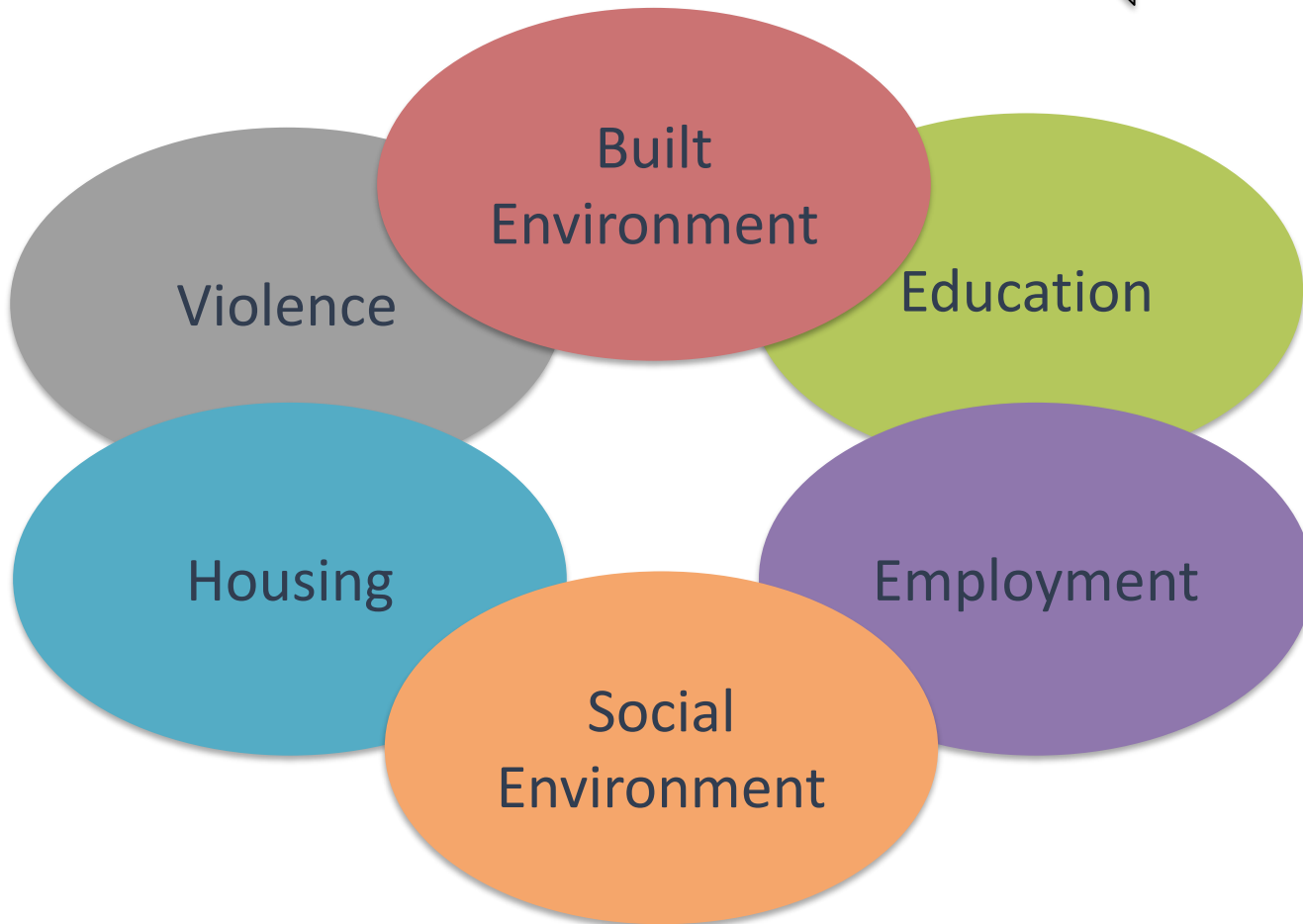
# Policy, Systems, & Environmental Change Approaches

---

**Social Determinants of Health**



**DPH Priority Health  
Outcome Issues**



Substance Use  
Disorders

Housing  
Stability /  
Homelessness

Mental Illness  
/ Mental  
Health

Chronic  
Disease



# Examples PSE Approaches

---

A non-exhaustive list of examples of policy, systems, and environmental change approaches, in the designated social determinant of health areas, that address racial equity.

## Employment

- Strategies to address increased minimum wage
- Approaches to support improved work conditions and health and safety regulations to reduce injury and illness

## Housing and Homelessness

- Strategies to address eviction prevention, public housing, housing rehabilitation, and supportive housing





# Examples PSE Approaches

---

## Early Education

- Workforce development and retention to address the shrinking and aging workforce
- Collection and analysis of data and information to inform statewide policy
- Ensuring sufficient reimbursement rates to provide high-quality services
- Build parent advocacy and leadership.

## Violence and Trauma

- Promote and establish trauma-informed care and the use of trauma or Adverse Childhood Experiences (ACEs) response teams
- Promote youth civic engagement and provide outreach, case management, workforce development, education, and mental health counselling

## Built Environment

- Transportation, planning, food security by involving multi-sector stakeholders through a health in all policies lens.



# The Grantmaking Process

---



# Community Health Fund Investment Process



# Grant Award Length and Amount

---

The Community Health Fund expects to fund multiple awards between **\$50,000 and \$200,000 per year up to 5 years** per award to advance **policy, systems, and environmental change** approaches. Awards may support both **planning and capital investments** (e.g. low-interest loans for new healthy retail) within policy, systems and environmental change approaches.



# Eligibility

---

- **Massachusetts based non-profit 501(c)3 organizations and municipalities**
- For this round of funding, the Fund will prioritize funding support to **communities outside of Boston**, that have not historically and routinely benefitted from previous local DoN community health funding, and have high rates of health inequities
- Strategies may focus on **geographic or population-based communities** at the **local, regional, or statewide levels**
- The Fund will also accept IOIs from **agencies and organizations geographically based in Boston** who are interested in **doing health & racial equity work statewide** or in **communities outside of Boston**

# PSE Funding Opportunity Timeline

---

Activity	Date
Funding Announcement Webinar	Tuesday, August 13, 2019
Inquiry of Ideas (IOI) due	Wednesday, October 2, 2019
Invitation to submit proposals	Friday, November 22, 2019
Proposals due	Wednesday, January 8, 2020
Notice of awards	Friday, February 28, 2020



# How to Apply

---

- ❑ Review the Request for Inquiry of Ideas (IOI)
- ❑ Develop your idea with your partners and engage community
- ❑ Attend two capacity building webinars in September
- ❑ Visit our webpage and submit your idea through an online platform
  - ❑ Cover Form
  - ❑ Questions (Background, Approach, Resources)



# Idea Assessment Criteria

---

Ideas will be assessed based on the following criteria:

- **Equity:** Demonstration that the idea is addressing a geography/population experiencing high rates of inequities; and that the ideas and approaches are community led, particularly by populations experiencing inequities, etc.
- **Impact:** Demonstration of logic connecting the approach to addressing the root cause → SDoH → Health Outcome.
- **Collaboration:** Demonstration of multi-sector partners with diverse perspectives.
- **Feasibility:** Likelihood of resources supporting success.





# Request for Inquiry of Ideas (IOI): Applicant Questions

---

## *Background*

- ☐ Briefly describe your agency, organization, or collaborative.
- ☐ Describe the issue you want to address and its root cause.
- ☐ Describe the population harmed by this issue.
- ☐ List the data/information sources you use to understand the health inequities that exist your community.



# Request for Inquiry of Ideas (IOI): Applicant Questions

---

## *Approach*

- ☐ **Describe your idea** for a policy, systems, or environmental change approach that addresses the root cause.
- ☐ Briefly explain how this **idea will address the SDoH area(s) and improve health outcome(s)**.
- ☐ **Define the community** that will be impacted/benefit from this idea/approach and how they will, at a minimum, **be engaged** in the proposed work. Priority will be given to ideas that come from and are led by populations with lived experience related to the issue being addressed.
- ☐ Identify **key partners you currently have** for implementing your activities and the **additional partners you will need** to engage to make this process a success.



# Request for Inquiry of Ideas (IOI): Applicant Questions

---

## *Resources*

- ☐ List the **approximate size of the financial investment** you are seeking from the Community Health Fund to support this work on an annual basis and the **number of years** for which you are seeking support.
- ☐ List any other **resources you need** to implement your idea, such as training, technical assistance, data/other information.



# Next Steps

---



# Capacity Building and Technical Assistance

---

Capacity Building	Technical Assistance
<p><u>Save the Dates</u></p> <p>Webinar 1: Wednesday, September 4, 2019, 11:00am – 12:30pm</p> <p>Webinar 2: Thursday, September 12, 2019, 10:30am – 12:00pm</p> <p>(Note: Capacity Building topics will be selected after gathering feedback from applicants.)</p>	<ul style="list-style-type: none"><li>• E-mail questions to <a href="mailto:CHFUND@hria.org">CHFUND@hria.org</a> or <a href="mailto:HealthyAgingFund@hria.org">HealthyAgingFund@hria.org</a></li><li>• Visit our <i><b>Frequently Asked Questions</b></i> webpage</li><li>• Sign up for a <b>15-minute phone session</b> with a technical assistance provider to discuss additional questions</li></ul>



# Visit Our Website – Coming Soon!



# Join Other Funding Announcement Webinars

---

## **Healthy Aging**

Wednesday, August 14

11:00 AM - 12:00 PM

Register here: <http://bit.ly/healthy-aging-chi>

## **Community Health Improvement Planning (CHIP) Processes**

Thursday, August 15

12:00 PM - 1:00 PM

Register here: <http://bit.ly/chip-chi>



# Contact Information

---

Stay in touch: [CHFund@hria.org](mailto:CHFund@hria.org) or [HealthyAgingFund@hria.org](mailto:HealthyAgingFund@hria.org)

**Nineequa Blanding, MPH**

Vice President, Grantmaking  
Director, Community Health &  
Healthy Aging Funds  
Health Resources in Action  
[nblanding@hria.org](mailto:nblanding@hria.org)

**Jennifer Lee, MPH**

Managing Director, Grantmaking  
Program Officer  
Health Resources in Action  
[jlee@hria.org](mailto:jlee@hria.org)

**Kevin Myers, MSPH**

Program Officer  
Health Resources in Action  
[kmyers@hria.org](mailto:kmyers@hria.org)

**Ben Wood, MPH**

Director, Division of Community  
Health Planning & Engagement  
MA Department of Public Health  
[ben.wood@state.ma.us](mailto:ben.wood@state.ma.us)

**Liz Maffei**

Program Coordinator  
MA Department of Public Health  
[elizabeth.maffei@state.ma.us](mailto:elizabeth.maffei@state.ma.us)

